

# TOWN OF WEBSTER, MASSACHUSETTS

# MEMORIAL BEACH PFAS

# WATER TREATMENT PLANT

## DWSRF PROJECT NO. 10380

## PERMIT SET

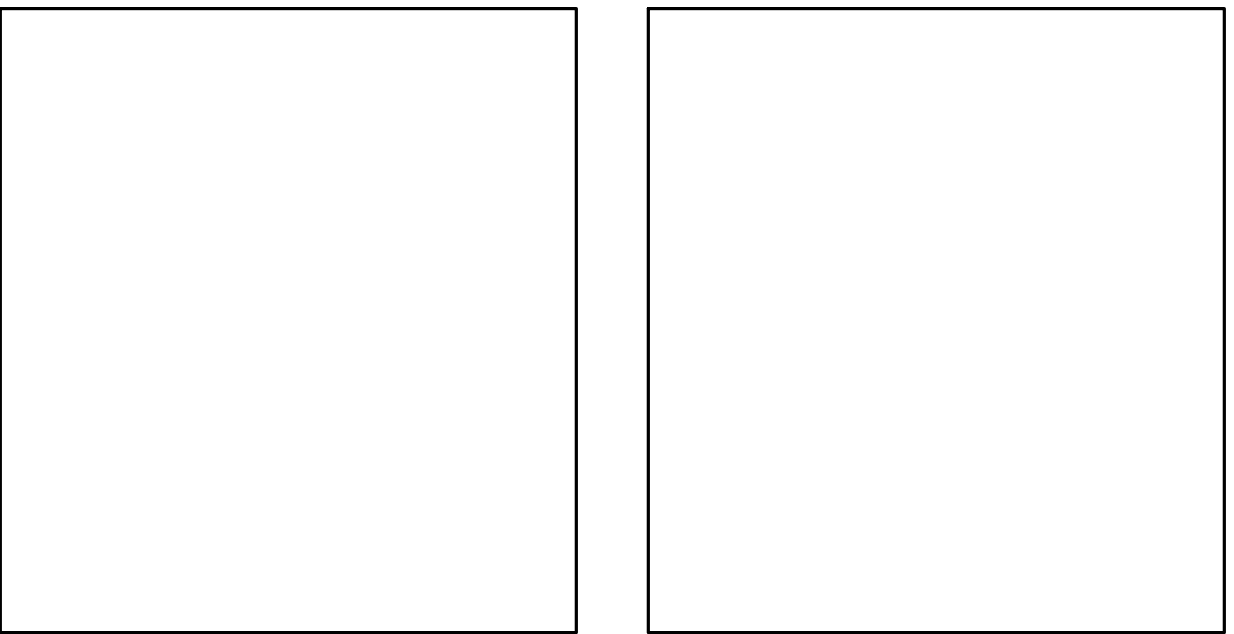
## SEPTEMBER 2023

LIST OF DRAWINGS		
SHEET NO.	DRAWING NO.	DRAWING TITLE
GENERAL		
1	G-001	COVER SHEET
2	G-002	GENERAL NOTES AND LEGEND
CIVIL		
3	C-101	EXISTING CONDITIONS WTP PLAN
4	C-102	EROSION CONTROL AND SITE DEMOLITION PLAN
5	C-103	SITE LAYOUT AND MATERIALS PLAN
6	C-104	SITE GRADING AND DRAINAGE PLAN
7	C-105	SITE UTILITY PLAN - 1
8	C-106	SITE UTILITY PLAN - 2
9	C-501	CIVIL DETAILS - 1
10	C-502	CIVIL DETAILS - 2
11	C-503	CIVIL DETAILS - 3
12	C-504	CIVIL DETAILS - 4
13	C-505	CIVIL DETAILS - 5
14	C-506	WELL 2A DETAILS
ARCHITECTURAL		
15	A-101	FIRST FLOOR PLAN
16	A-201	BUILDING ELEVATIONS
17	A-202	BUILDING ELEVATIONS
18	A-301	BUILDING SECTIONS
ELECTRICAL		
19	E-201	ELECTRICAL LIGHTING PLAN - WTP



LOCATION MAP  
SCALE: 1" = 20,000'

PREPARED BY:  
**Tighe&Bond**



TOWN ADMINISTRATOR  
RICHARD LAFOND

WATER SUPERINTENDENT  
THOMAS CUTLER

BOARD OF SELECTMEN  
EARL GABOR, CHAIRMAN  
TOM KLEBART, VICE-CHAIRMAN  
RANDY BECKER, SECRETARY  
LISA KONTOES, SELECTMAN  
MARK ROGERS, SELECTMAN

WATER COMMISSIONERS  
TOM ANDRADE, CHAIRMAN  
EARL GABOR, VICE-CHAIRMAN  
MARC BECKER, MEMBER  
DAN DUTEAU, MEMBER

**NOT FOR CONSTRUCTION**

**COMPLETE SET 19 SHEETS**



Last Saved: 8/29/2023 2:15pm By: TWalsh  
Plotted On: Aug 29, 2023 2:15pm By: TWalsh  
Tighe & Bond\3\1\W5002-034 Webster MA\034 PFAS Water Treatment\Drawings - Figures\MemorialBeach\01\_Civil\W5002-034 Memorial Beach Cover Sheet.dwg

LEGEND		
DESCRIPTION	EXISTING	PROPOSED
PROPERTY LINE	----	----
LIMITS OF WORK	----	----
INTERMEDIATE CONTOURS	-----	-----
INDEX CONTOURS	--- 25 ---	--- 25 ---
SPOT GRADE	<i>X 141.2</i>	+ 32.0
MAGNITUDE & DIRECTION OF SLOPE		← 0.0%
STORM DRAIN	----- SD -----	----- SD -----
GRAVITY SANITARY SEWER	----- SS -----	----- SS -----
SANITARY SEWER FORCE MAIN	----- SFM -----	----- SFM -----
WATER SERVICE	----- W -----	----- W -----
POTABLE WATER	----- PW -----	----- PW -----
RAW WATER	----- RW -----	----- RW -----
UNDERGROUND ELECTRIC	----- E -----	----- E -----
GAS SERVICE	----- G -----	----- G -----
OVERHEAD UTILITY	----- OHW -----	----- OHW -----
CURB	=====	=====
EDGE OF PAVEMENT	-----	-----
DIRT ROAD	-----	-----
STONE WALL	-----	-----
FENCE	--- X --- X --- X ---	--- X --- X --- X ---
STORM DRAIN STRUCTURES	MANHOLE ① S CATCH BASIN ②CB	MANHOLE ② CATCH BASIN ②
SANITARY SEWER MANHOLE	○	⊙
WATER SERVICE STRUCTURES	HYDRANT ③ MANHOLE ④ VALVE ⑤	HYDRANT ③ MANHOLE ④ VALVE ⑤
GAS SERVICE STRUCTURES	MANHOLE ⑥ VALVE ⑦	MANHOLE ⑥ VALVE ⑦
ELECTRIC SERVICE STRUCTURES	● MANHOLE ⑧ LIGHT ☆	UTILITY CO. POLE # ● MANHOLE ⑧ LIGHT ☆
TREELINE	~~~~~	~~~~~
25-FOOT BUFFER TO WETLAND	-----	-----
50-FOOT BUFFER TO WETLAND	-----	-----
100-FOOT BUFFER TO WETLAND	-----	-----

DEMOLITION / GEOTECHNICAL	
EROSION & SEDIMENT CONTROL	=====
UTILITY TO BE ABANDONED	//////////
UTILITY TO BE DEMOLISHED	-xxxxxxxxxxxxxxxxxxxxxxxx-
ITEM TO BE DEMOLISHED	▣
TEST PIT	⊕
MONITORING WELL	⊗
BORING	⊕

EROSION CONTROL AND RESOURCE AREA PROTECTION NOTES

- PROVIDE ALL EROSION CONTROL MEASURES SHOWN, SPECIFIED, REQUIRED BY PERMIT, AND/OR REQUIRED BY THE ENGINEER PRIOR TO ANY CONSTRUCTION OR IMMEDIATELY UPON REQUEST. MAINTAIN SUCH CONTROL MEASURES UNTIL FINAL SURFACE TREATMENTS ARE IN PLACE AND/OR UNTIL PERMANENT VEGETATION IS ESTABLISHED. INSPECT AFTER EACH RAINSTORM AND DURING MAJOR STORM EVENTS TO CONFIRM THAT ALL SEDIMENTATION AND EROSION CONTROL MEASURES REQUIRED ARE IN PLACE AND EFFECTIVE.
- PRIOR TO STARTING WORK, CLEARLY STAKE WORK LIMITS. DO NOT DISTURB VEGETATION AND TOPSOIL BEYOND THE PROPOSED LIMITS. COORDINATE WITH THE ENGINEER FOR LOCATIONS OF TEMPORARY STOCKPILING OF TOPSOIL DURING CONSTRUCTION.
- INSTALL SILT SACKS OR OTHER APPROVED SEDIMENTATION BARRIERS IN/AT ALL CATCH BASINS IN THE PROJECT AREA.
- COMPACT, STABILIZE, AND LOAM AND SEED SIDE SLOPES, SHOULDER AREAS AND DISTURBED VEGETATED AREAS IN ACCORDANCE WITH THE CONTRACT DOCUMENTS AND AS REQUIRED BY PERMITS. GRADE SIDE SLOPES, SHOULDER AREAS AND DISTURBED VEGETATED AREAS TO A MAXIMUM SLOPE OF 3 HORIZONTAL TO 1 VERTICAL (3H:1V), WHERE POSSIBLE. PROVIDE BIODEGRADABLE EROSION CONTROL BLANKETS TO PREVENT EROSION WHERE SLOPES ARE STEEPER THAN 3H:1V.
- SETTLE OR FILTER ALL SILT-LADEN WATER FROM DEWATERING ACTIVITIES IN A SEDIMENTATION OR FILTER BAG TO REMOVE SEDIMENTS PRIOR TO RELEASE USING A SEDIMENTATION OR FILTER BAG LOCATED DOWN-GRADIENT OF THE DEWATERED AREA.
- SWEEP, COLLECT, REMOVE AND DISPOSE OF ANY SEDIMENT TRACKED ONTO PUBLIC RIGHT-OF-WAYS AT THE END OF EACH DAY.
- LOAM AND SEED ALL DISTURBED VEGETATED AREAS TO ESTABLISH COVER AND STABILIZATION AS SOON AS POSSIBLE FOLLOWING DISTURBANCE.
- MAINTAIN AN ADDITIONAL SUPPLY OF EROSION CONTROL MEASURES ON-SITE FOR EMERGENCY REPAIRS.
- STORE FUEL, OIL, PAINT, OR OTHER HAZARDOUS MATERIALS IN A SECONDARY CONTAINER AND REMOVE TO A SECURE LOCKED AND COVERED AREA DURING NON-WORK HOURS.

SURFACE RESTORATION NOTES

- ALL PAVEMENT DAMAGED BY THE CONTRACTOR'S OPERATIONS SHALL BE REPLACED IN ACCORDANCE WITH THE CONTRACT DOCUMENTS.
- PROVIDE SITE GRADING AT HANDICAPPED RAMPS, SIDEWALKS, AND BUILDING ENTRANCES THAT IS CONSISTENT WITH THE RELEVANT ACCESS REQUIREMENTS OF THE ARCHITECTURAL BARRIERS ACT (ABA), THE AMERICANS WITH DISABILITIES ACT (ADA), AND MA ARCHITECTURAL ACCESS BOARD REQUIREMENTS (AAB). SMALL CHANGES IN GRADE OVER RELATIVELY SHORT DISTANCES (E.G. AT PARKING SPACES, ACCESSIBLE ROUTES, AND RAMPS) MIGHT NOT BE CLEARLY DEPICTED WITHIN THE CONTOUR INTERVAL SHOWN. COMPLY WITH THE CRITERIA IN THESE STANDARDS. SELECT MAXIMUM SLOPE CRITERIA ARE REPRODUCED BELOW:
  - ACCESSIBLE PARKING STALL AND PASSENGER LOADING ZONE (ANY DIRECTION) SLOPE < 2.0%
  - LONGITUDINAL SLOPE ALONG ACCESSIBLE ROUTES < 5.0%
  - CROSS SLOPE ALONG ACCESSIBLE ROUTES < 2.0%
- PROTECT PROJECT FEATURES (E.G., WALLS, FENCES, MAIL BOXES, SIGNS, SIDEWALKS, CURBING, STAIRS, WALKWAYS, TREES, ETC.) FROM DAMAGE DURING CONSTRUCTION, INCLUDING PROVIDING TEMPORARY SUPPORTS, WHEN APPROPRIATE.
- EXISTING SURVEY MONUMENTS DISTURBED BY THE CONTRACTOR SHALL BE REPLACED BY A LAND SURVEYOR LICENSED IN THE STATE IN WHICH THE WORK IS PERFORMED AT NO ADDITIONAL COST TO THE OWNER.
- COORDINATE THE ADJUSTMENT OF EXISTING UTILITY STRUCTURES WITH EACH RESPONSIBLE UTILITY OWNER PRIOR TO RECONSTRUCTION AND/OR PAVING OPERATIONS. RAISE ALL STRUCTURES TO FINISHED GRADES PRIOR TO THE END OF THE CONSTRUCTION SEASON AND PRIOR TO FINISHED PAVING.
- REPAIR DISTURBED PAVED SURFACES AT THE END OF EACH WORK WEEK, UNLESS OTHERWISE APPROVED/REQUIRED BY THE OWNER.
- PLACE TEMPORARY BITUMINOUS CONCRETE PAVEMENT AT DISTURBED PORTLAND CEMENT CONCRETE SIDEWALKS AND DRIVEWAYS AT THE END OF EACH WORK WEEK, UNLESS OTHERWISE APPROVED/REQUIRED BY THE OWNER.
- RESTORE ALL AREAS DISTURBED BY THE CONTRACTOR BEYOND THE PAYLINE LIMITS TO ORIGINAL CONDITIONS AT NO ADDITIONAL COST TO THE OWNER.
- REGRADE ALL UNPAVED AREAS DISTURBED BY THE WORK AS REQUIRED. REPAIR/REPLACE PAVED SURFACES DISTURBED BY THE WORK IN-KIND, UNLESS OTHERWISE NOTED. RESTORE SURFACES TO EXISTING OR PROPOSED CONDITIONS AS INDICATED ON THE DRAWINGS.
- PROVIDE A SMOOTH, FLUSH TRANSITION BETWEEN ALL NEW AND EXISTING PAVEMENTS AND WALKING SURFACES.

ABBREVIATIONS

ABDN('D)	ABANDON(ED)
AC	ASBESTOS CEMENT PIPE
BC	BITUMINOUS CURB
BFP	BACK FLOW PREVENTOR
BIT	BITUMINOUS
BL	BASELINE
BLDG	BUILDING
BLSF	BORDERING LANDS
	SUBJECT TO FLOODING
BND	BOUND
BOC	BOTTOM OF CURB
BOT	BOTTOM
BS	BOTTOM OF STEP
BW	BOTTOM OF WALL
CATV	CABLE TELEVISION
CB	CATCH BASIN
CEM	CEMENT
CI	CAST IRON PIPE
CL	CENTERLINE
CLF	CHAIN LINK FENCE
CO	CLEAN OUT
CONC	CONCRETE
CPP	CORRUGATED
	POLYETHYLENE PIPE
CY	CUBIC YARD
DH	DRILL HOLE
DI	DUCTILE IRON PIPE
DIA	DIAMETER
DMH	DRAIN MANHOLE
E	EAST
EF	EACH FACE
EG	EXISTING GRADE
EL/ELEV	ELEVATION
ELEC	ELECTRIC
EMH	ELECTRIC MANHOLE
EOP	EDGE OF PAVEMENT
EW	EACH WAY
EXIST	EXISTING
FES	FLARED END SECTION
FF	FINISH FLOOR
FM	FORCE MAIN
G	GAS
GG	GAS GATE
GRAN	GRANITE
HC	HANDICAP
HDPE	HIGH DENSITY
	POLYETHYLENE
HMA	HOT MIX ASPHALT
HYD	HYDRANT
IN	INCHES
INV	INVERT
IP	IRON PIN
L	LENGTH OF CURB
LP	LIGHT POLE
LT	LEFT
MAX	MAXIMUM
MH	MANHOLE
MIN	MINIMUM
MISC	MISCELLANEOUS
MON	MONUMENT
MJ	MECHANICAL JOINT

ABBREVIATIONS CONT'D

N	NORTH
NITC	NOT IN THIS CONTRACT
NTS	NOT TO SCALE
N/A	NOT APPLICABLE
N/F	NOW OR FORMERLY
OC	ON CENTER
OCS	OUTLET CONTROL STRUCTURE
OH	OVERHEAD
PB	PLANT BED
PC	POINT OF CURVATURE
PCC	POINT OF COMPOUND
	CURVATURE
PCPP	PERFORATED CORRUGATED
	POLYETHYLENE PIPE
PERF	PERFORATED
PI	POINT OF INTERSECTION
PRC	POINT OF REVERSE CURVATURE
PSF	POUNDS PER SQUARE FOOT
PSI	POUNDS PER SQUARE INCH
PT	POINT OF TANGENCY
PVC	POLYVINYLCHLORIDE
PVMT	PAVEMENT
R	RADIUS
RCP	REINFORCED CONCRETE PIPE
RD	ROOF DRAIN
REV	REVISION
ROW	RIGHT OF WAY
RT	RIGHT
R&D	REMOVE AND DISPOSE
R&R	REMOVE AND RESET
R&S	REMOVE AND STACK
S	SOUTH
SAN	SANITARY
SCH	SCHEDULE
SF	SQUARE FOOT
SMH	SEWER MANHOLE
SS	STAINLESS STEEL
STA	STATION
STL	STEEL
STRM	STORM
T	TANGENT LENGTH
TC	TOP OF CURB
TEL	TEL-DATA
TP	TEST PIT
TS	TOP OF STEP
TW	TOP OF WALL
TYP	TYPICAL
UP	UTILITY POLE
W	WATER
WG	WATER GATE
WV	WATER VALVE
XFMR	TRANSFORMER

BASE PLAN NOTES

- THE EXISTING CONDITIONS INFORMATION SHOWN ON THE DRAWINGS IS BASED ON THE FOLLOWING:
  - SURVEY DRAWINGS PROVIDED BY WSP USA, INC., TITLED "SITE LAYOUT PLAN, PUMPING STATION ROAD, WEBSTER, MASSACHUSETTS" AND DATED JANUARY 17, 2023
- UTILITY LOCATIONS SHOWN WERE PLOTTED FROM INFORMATION SUPPLIED BY RESPECTIVE UTILITY COMPANIES AND DATA OBTAINED FROM FIELD SURVEYS AND AS BUILT DRAWINGS. THE ACCURACY AND COMPLETENESS OF SUBSURFACE INFORMATION SHOWN ON THESE DRAWINGS IS NOT GUARANTEED. DETERMINE THE LOCATIONS AND ELEVATIONS OF ALL UTILITIES WHICH MAY AFFECT CONSTRUCTION OPERATIONS.
- SUB-SURFACE EXPLORATIONS WERE PERFORMED BY GEOSearch, INC. ON MAY 1 AND 2, 2023. BORING LOCATIONS SHOWN ON THE DRAWINGS ARE APPROXIMATE AND BORING INFORMATION IS NOT GUARANTEED IN ANY WAY TO REPRESENT EXISTING CONDITIONS. BORING LOGS ARE INCLUDED IN THE PROJECT MANUAL FOR THE CONTRACTORS INFORMATION ONLY.
- SOIL EVALUATIONS WERE PERFORMED IN THE AREAS OF THE PROPOSED STORMWATER MANAGEMENT SYSTEMS BY TIMOTHY J. GRACE ON APRIL 21, 2023. TEST PIT LOCATIONS ARE SHOWN ON THE SITE PLANS.
- THE DRAWINGS ARE BASED ON THE FOLLOWING DATUMS: HORIZONTAL NAD83; VERTICAL NAVD88
- THE EXISTING CONDITIONS SHOWN ARE APPROXIMATE. FIELD VERIFY EXISTING CONDITIONS.

GENERAL NOTES

- NOTIFY DIGSAFE AT 1-888-344-7233 AND OTHER UTILITY OWNERS IN THE AREA NOT ON THE DIGSAFE LIST AT LEAST 72 HOURS PRIOR TO ANY DIGGING, TRENCHING, ROCK REMOVAL, DEMOLITION, BORING, BACKFILLING, GRADING, LANDSCAPING, OR ANY OTHER EARTH MOVING OPERATIONS.
- LOCATIONS OF EXISTING UTILITIES ARE APPROXIMATE. IN ADDITION, SOME UTILITIES MAY NOT BE SHOWN. DETERMINE THE EXACT LOCATION OF UTILITIES BY TEST PIT OR OTHER METHODS, AS NECESSARY TO PREVENT DAMAGE TO UTILITIES AND/OR INTERRUPTIONS IN UTILITY SERVICE. PERFORM TEST PIT EXCAVATIONS AND OTHER INVESTIGATIONS TO LOCATE UTILITIES, AND PROVIDE THIS INFORMATION TO THE ENGINEER, PRIOR TO CONSTRUCTING THE PROPOSED IMPROVEMENTS. LOCATE ALL EXISTING UTILITIES TO BE CROSSED BY HAND EXCAVATION.
- NOT ALL OF THE UTILITY SERVICES TO BUILDINGS ARE SHOWN. THE CONTRACTOR SHALL ANTICIPATE THAT EACH PROPERTY HAS SERVICE CONNECTIONS FOR THE VARIOUS UTILITIES.
- BOLD TEXT AND LINES INDICATE PROPOSED WORK. LIGHT TEXT AND LINES INDICATE APPROXIMATE EXISTING CONDITIONS.
- TIGHE & BOND ASSUMES NO RESPONSIBILITY FOR ANY ISSUES, LEGAL OR OTHERWISE, RESULTING FROM CHANGES MADE TO THESE DRAWINGS WITHOUT WRITTEN AUTHORIZATION FROM TIGHE & BOND.
- EXCAVATE ADDITIONAL TEST PITS TO LOCATE EXISTING UTILITIES AS DIRECTED OR APPROVED BY THE ENGINEER.
- NOTIFY THE ENGINEER OF ANY UTILITIES IDENTIFIED DURING CONSTRUCTION THAT ARE NOT SHOWN ON THE DRAWINGS OR THAT DIFFER IN SIZE OR MATERIAL.
- THE CONTRACTOR IS RESPONSIBLE FOR SITE SAFETY; COORDINATION WITH THE OWNER, ALL SUBCONTRACTORS, AND WITH OTHER CONTRACTORS WORKING WITHIN THE LIMITS OF WORK, THE MEANS AND METHODS OF CONSTRUCTING THE PROPOSED WORK.
- OBTAIN, PAY FOR AND COMPLY WITH PERMITS, NOTICES AND FEES NECESSARY TO COMPLETE THE WORK. ARRANGE AND PAY FOR NECESSARY INSPECTIONS AND APPROVALS FROM THE JURISDICTIONAL AUTHORITIES.
- SHORE UTILITY TRENCHES WHERE FIELD CONDITIONS DICTATE AND/OR WHERE REQUIRED BY LOCAL, STATE AND FEDERAL HEALTH AND SAFETY CODES.
- FIELD VERIFY ALL EXISTING CONDITIONS PRIOR TO CONSTRUCTION. IF FIELD CONDITIONS ARE OBSERVED THAT VARY SIGNIFICANTLY FROM THOSE SHOWN ON THE DRAWINGS, IMMEDIATELY NOTIFY THE ENGINEER IN WRITING FOR RESOLUTION OF THE CONFLICTING INFORMATION.
- PROTECT AND MAINTAIN ALL UTILITIES IN THE AREAS UNDER CONSTRUCTION DURING THE WORK. LEAVE ALL PIPES AND STRUCTURES WITHIN THE LIMITS OF THE CONTRACT IN A CLEAN AND OPERABLE CONDITION AT THE COMPLETION OF THE WORK. TAKE ALL NECESSARY PRECAUTIONS TO PREVENT SAND AND SILT FROM DISTURBED AREAS FROM ENTERING THE DRAINAGE SYSTEM.
- NOTIFY THE ENGINEER IN WRITING OF ANY CONFLICT, ERROR, AMBIGUITY, OR DISCREPANCY WITH THE PLANS OR BETWEEN THE PLANS AND ANY APPLICABLE LAW, REGULATION, CODE, STANDARD SPECIFICATION, OR MANUFACTURER'S INSTRUCTIONS.
- THE CONTRACTOR IS RESPONSIBLE FOR SUPPORT OF EXISTING UTILITIES AND REPAIR OR REPLACEMENT COSTS OF UTILITIES DAMAGED DURING CONSTRUCTION, WHETHER ABOVE OR BELOW GRADE. REPLACE DAMAGED UTILITIES IMMEDIATELY AT NO ADDITIONAL COST TO THE OWNER AND AT NO COST TO THE PROPERTY OWNER.
- TAKE NECESSARY MEASURES AND PROVIDE CONTINUOUS BARRIERS OF SUFFICIENT TYPE, SIZE, AND STRENGTH TO PREVENT ACCESS TO ALL WORK AND STAGING AREAS AT THE COMPLETION OF EACH DAYS WORK.
- NO OPEN TRENCHES WILL BE ALLOWED OVER NIGHT. THE USE OF ROAD PLATES TO PROTECT THE EXCAVATION WILL BE CONSIDERED UPON REQUEST, BUT BACKFILLING IS PREFERRED.
- THE CONTRACTOR IS RESPONSIBLE FOR ALL NECESSARY TRAFFIC CONTROL/SAFETY DEVICES TO ENSURE SAFE VEHICULAR AND PEDESTRIAN ACCESS THROUGH THE WORK AREA, OR FOR SAFELY IMPLEMENTING DETOURS AROUND THE WORK AREA. PERFORM TRAFFIC CONTROL IN ACCORDANCE WITH THE CONTRACTOR'S APPROVED TRAFFIC CONTROL PLAN.
- MAINTAIN EMERGENCY ACCESS TO ALL PROPERTIES WITHIN THE PROJECT AREA AT ALL TIMES DURING CONSTRUCTION.
- WHEN WORKING IN THE ROAD, PROVIDE THE OWNER AND LOCAL FIRE/POLICE/SCHOOL AUTHORITIES A DETAILED PLAN OF APPROACH INDICATING METHODS OF PROPOSED TRAFFIC ROUTING ON A DAILY BASIS. PROVIDE COORDINATION TO ENSURE COMMUNICATION AND COORDINATION BETWEEN THE OWNER, CONTRACTOR AND LOCAL FIRE/POLICE/SCHOOL AUTHORITIES THROUGHOUT THE CONSTRUCTION PERIOD.
- REMOVE AND DISPOSE OF ALL CONSTRUCTION-RELATED WASTE MATERIALS AND DEBRIS IN STRICT ACCORDANCE WITH ALL APPLICABLE LOCAL, STATE, AND FEDERAL LAWS.
- THE TERM "DEMOLISH" USED ON THE DRAWINGS MEANS TO REMOVE AND DISPOSE OF IN ACCORDANCE WITH LOCAL, STATE, AND FEDERAL REQUIREMENTS.
- THE TERM "ABANDON" USED ON THE DRAWINGS MEANS TO LEAVE IN PLACE AND TAKE APPROPRIATE MEASURES TO DECOMMISSION AS SPECIFIED OR NOTED ON THE DRAWINGS.
- ALL PROPOSED WORK MAY BE ADJUSTED IN THE FIELD BY THE OWNER'S PROJECT REPRESENTATIVE TO MEET EXISTING CONDITIONS.

Tighe&Bond

PERMIT SET  
NOT FOR  
CONSTRUCTION

THIS DOCUMENT IS INCOMPLETE AND IS RELEASED TEMPORARILY FOR PROGRESS REVIEW ONLY. IT IS NOT INTENDED FOR BIDDING OR CONSTRUCTION PURPOSES.

MEMORIAL  
BEACH PFAS  
WTP

Webster Water  
Department

Webster, MA

A	9/5/2023	PERMIT SET
MARK	DATE	DESCRIPTION
PROJECT NO: W5002-034		
DATE: SEPTEMBER 5, 2023		
FILE: W5002-034 Memorial Beach Cover Sheet.dwg		
DRAWN BY: TCW		
DESIGNED/CHECKED BY: TJG/DMT		
APPROVED BY:		

GENERAL NOTES  
AND LEGEND

SCALE: NONE

G-002

THIS DOCUMENT IS INCOMPLETE AND IS  
RELEASED TEMPORARILY FOR PROGRESS  
REVIEW ONLY. IT IS NOT INTENDED FOR  
BIDDING OR CONSTRUCTION PURPOSES.

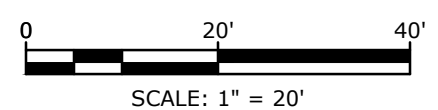
Town of Webster,  
Massachusetts

A	9/5/2023	PERMIT SET
MARK	DATE	DESCRIPTION
PROJECT NO:	W5002-034-MB	
DATE:	SEPTEMBER 5, 2023	
FILE:	W5002-034-CS-MB-Site.dwg	
DRAWN BY:	TCW	
DESIGNED/CHECKED BY:	TJG/DMT	
APPROVED BY:	-	

## EXISTING CONDITIONS WTP PLAN

SCALE: 1" = 20'

C-101



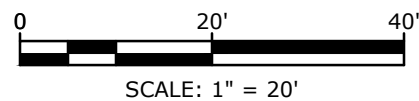


THIS DOCUMENT IS INCOMPLETE AND IS  
RELEASED TEMPORARILY FOR PROGRESS  
REVIEW ONLY. IT IS NOT INTENDED FOR  
BIDDING OR CONSTRUCTION PURPOSES.

Town of Webster,  
Massachusetts

## EROSION CONTROL AND SITE DEMOLITION PLAN

C-102



THIS DOCUMENT IS INCOMPLETE AND IS  
RELEASED TEMPORARILY FOR PROGRESS  
REVIEW ONLY. IT IS NOT INTENDED FOR  
BIDDING OR CONSTRUCTION PURPOSES.

# Webster Water Department

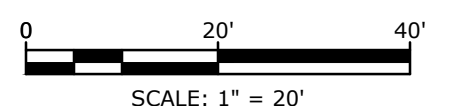
Town of Webster,  
Massachusetts

A	9/5/2023	PERMIT SET
MARK	DATE	DESCRIPTION
PROJECT NO:		W5002-034-MB
DATE:		SEPTEMBER 5, 2023
FILE:		W5002-034-CS-MB-Site.dwg
DRAWN BY:		TCW
DESIGNED/CHECKED BY:		TJG/DMT
APPROVED BY:		-

## SITE LAYOUT AND MATERIALS PLAN

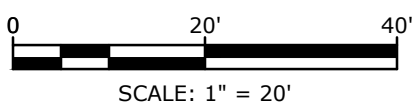
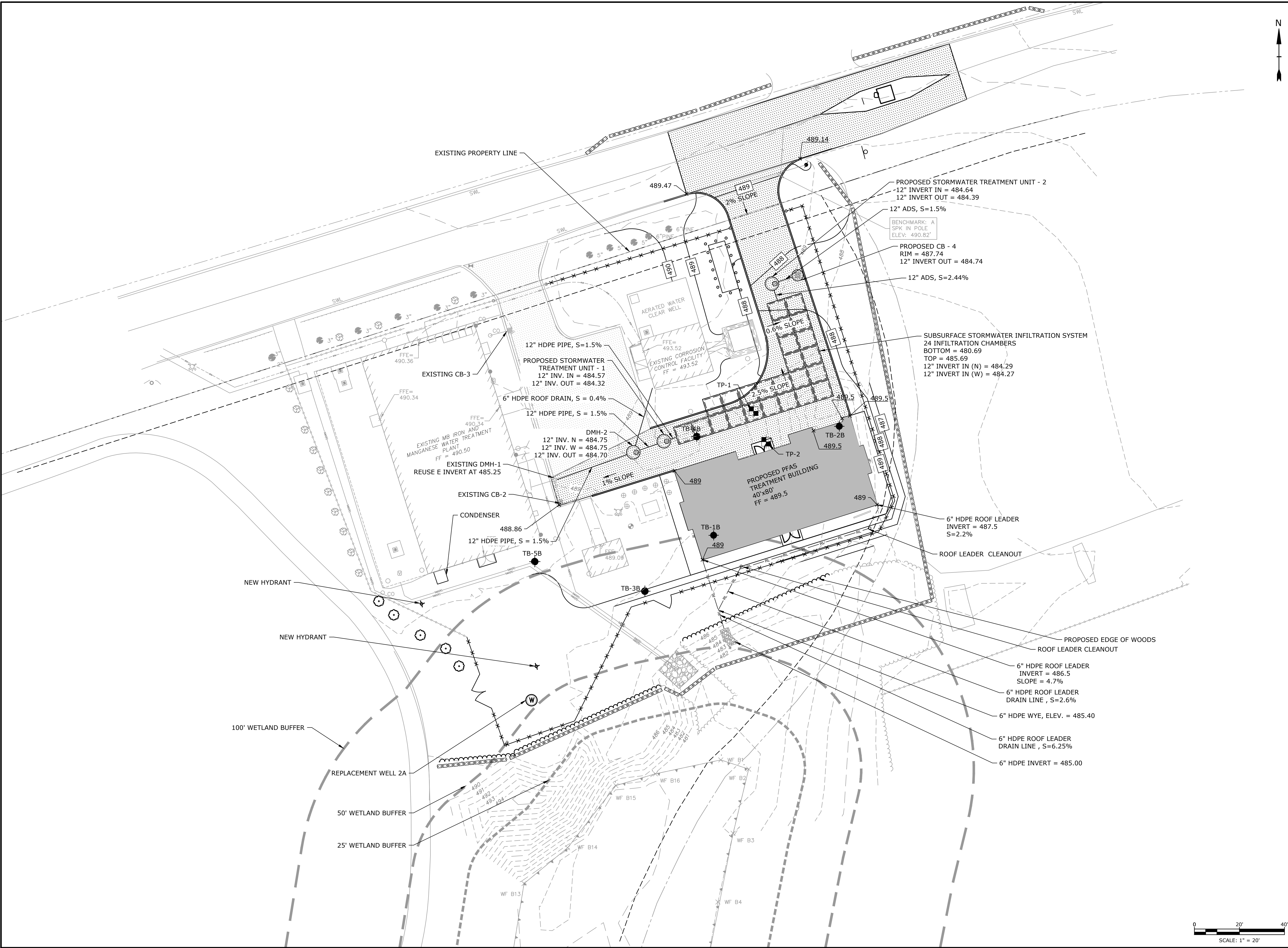
SCALE: 1" = 20'

C-103





Last Saved: 8/29/2023 2:15pm By: TWalsh  
Plotted On: Aug 29, 2023 2:15pm  
Tighe & Bond: J:\W5002 Webster MA\034 PFAS Water Treatment\Drawings - Figures\MemorialBeach\01-Civil\W5002-034-CS-MB-Site.dwg



**Tighe&Bond**

**PERMIT SET  
NOT FOR  
CONSTRUCTION**

THIS DOCUMENT IS INCOMPLETE AND IS  
RELEASED TEMPORARILY FOR PROGRESS  
REVIEW ONLY. IT IS NOT INTENDED FOR  
BIDDING OR CONSTRUCTION PURPOSES.

**MEMORIAL  
BEACH PFAS  
WTP**

Webster Water  
Department

Town of Webster,  
Massachusetts

A	9/5/2023	PERMIT SET
MARK	DATE	DESCRIPTION
PROJECT NO:		W5002-034-MB
DATE:		SEPTEMBER 5, 2023
FILE:		W5002-034-CS-MB-Site.dwg
DRAWN BY:		TCW
DESIGNED/CHECKED BY:		TIG/DMT
APPROVED BY:		-

**SITE GRADING AND  
DRAINAGE PLAN**

SCALE: 1" = 20'

**C-104**



SEE SHEET C-505 FOR STORMWATER  
INFILTRATION SYSTEM CHAMBERS

**PERMIT SET  
NOT FOR  
CONSTRUCTION**

THIS DOCUMENT IS INCOMPLETE AND IS  
RELEASED TEMPORARILY FOR PROGRESS  
REVIEW ONLY. IT IS NOT INTENDED FOR  
BIDDING OR CONSTRUCTION PURPOSES.

# MEMORIAL BEACH PFAS WTP

# Webster Water Department

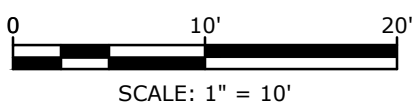
Town of Webster,  
Massachusetts

A	9/5/2023	PERMIT SET
MARK	DATE	DESCRIPTION
PROJECT NO:		W5002-034-MB
DATE:		SEPTEMBER 5, 2023
FILE:		W5002-034-CS-MB-Site.dwg
DRAWN BY:		TCW
DESIGNED/CHECKED BY:		TJG/DMT
APPROVED BY:		-

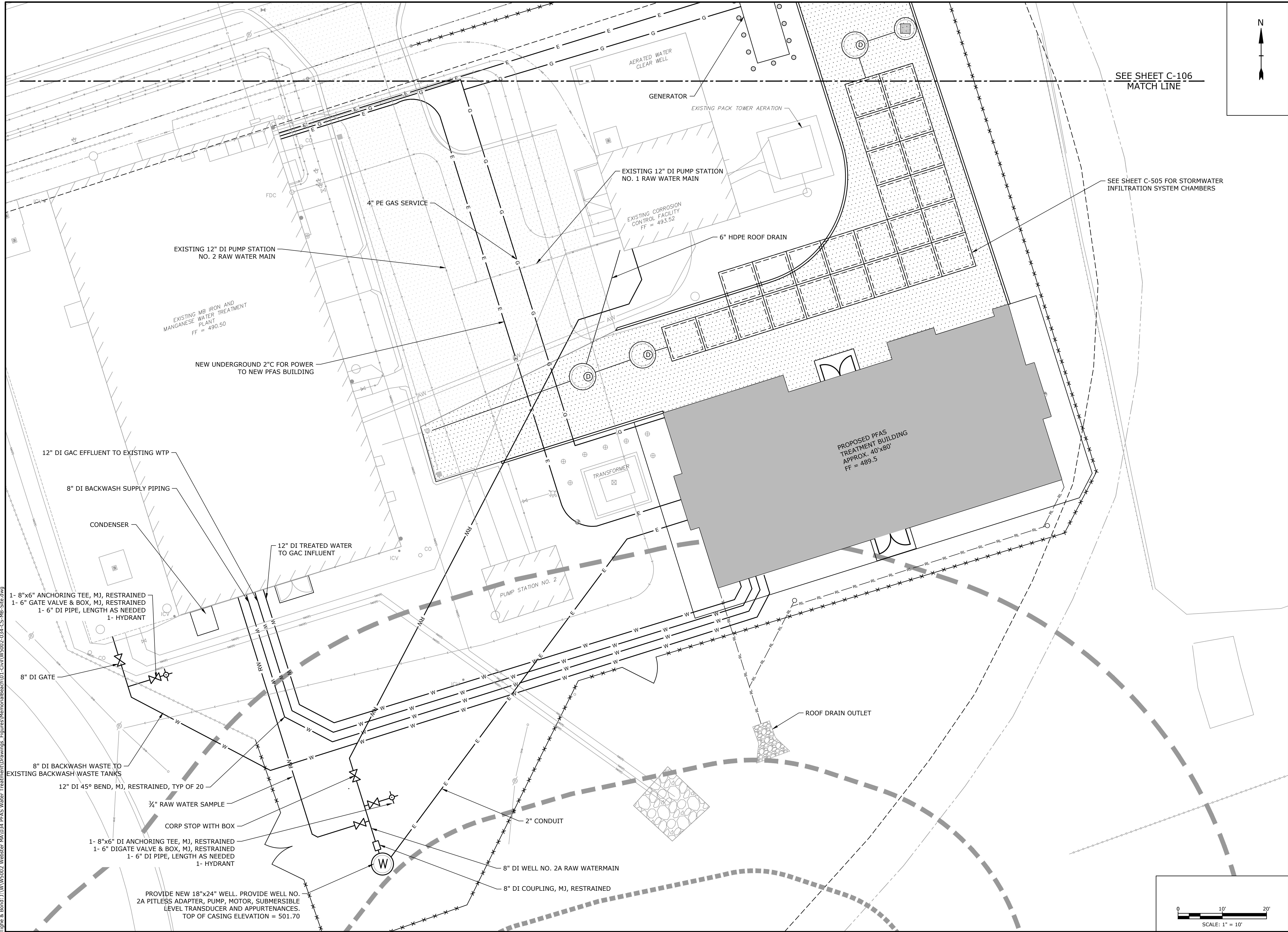
# SITE UTILITY PLAN - 1

SCALE: 1" = 10'

C-105



Plot Saved: 8/29/2023  
Plotted On: Aug 29, 2023-2:15pm By: TWalsh





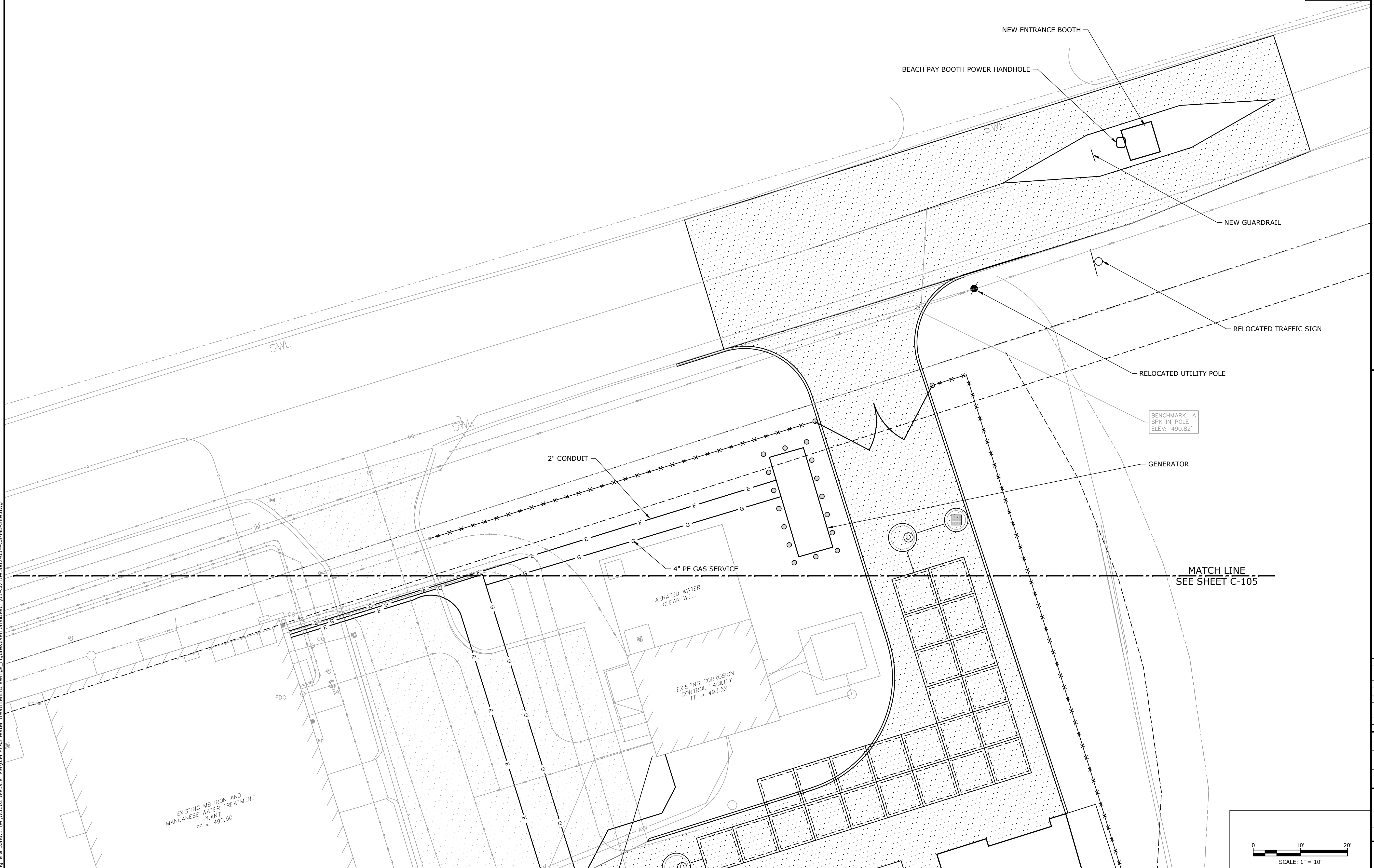
THIS DOCUMENT IS INCOMPLETE AND IS  
RELEASED TEMPORARILY FOR PROGRESS  
REVIEW ONLY. IT IS NOT INTENDED FOR  
BIDDING OR CONSTRUCTION PURPOSES.

Town of Webster,  
Massachusetts

A	9/5/2023	PERMIT SET
MARK	DATE	DESCRIPTION
PROJECT NO:		W5002-034-MB
DATE:		SEPTEMBER 5, 2023
FILE:		W5002-034-CS-MB-Site.dwg
DRAWN BY:		TCW
DESIGNED/CHECKED BY:		TJG/DMT
APPROVED BY:		-

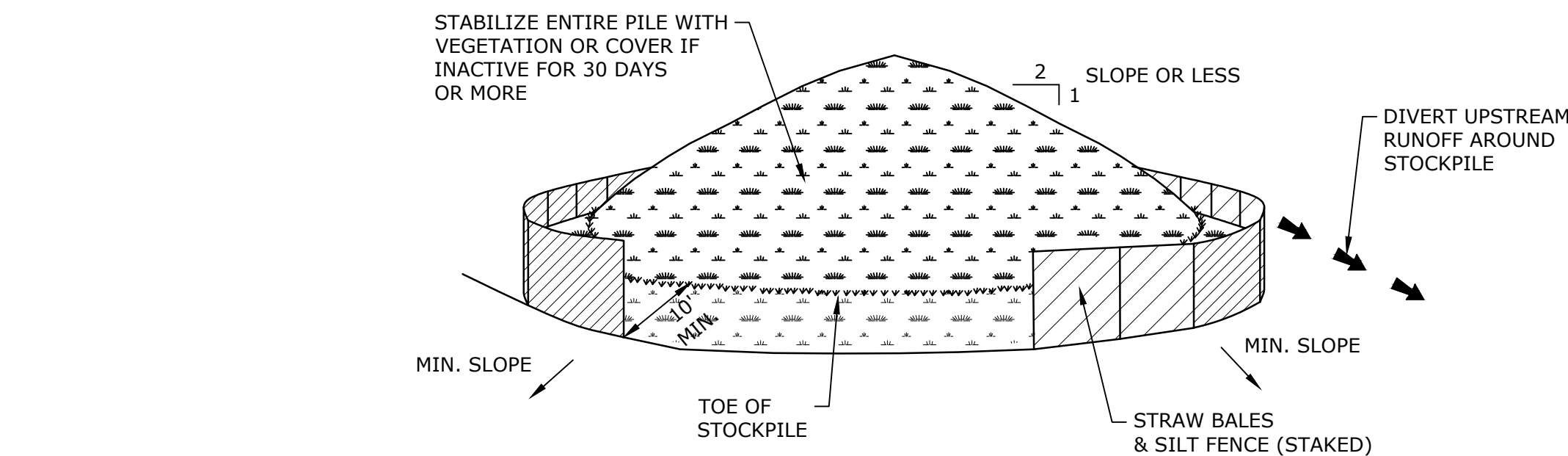
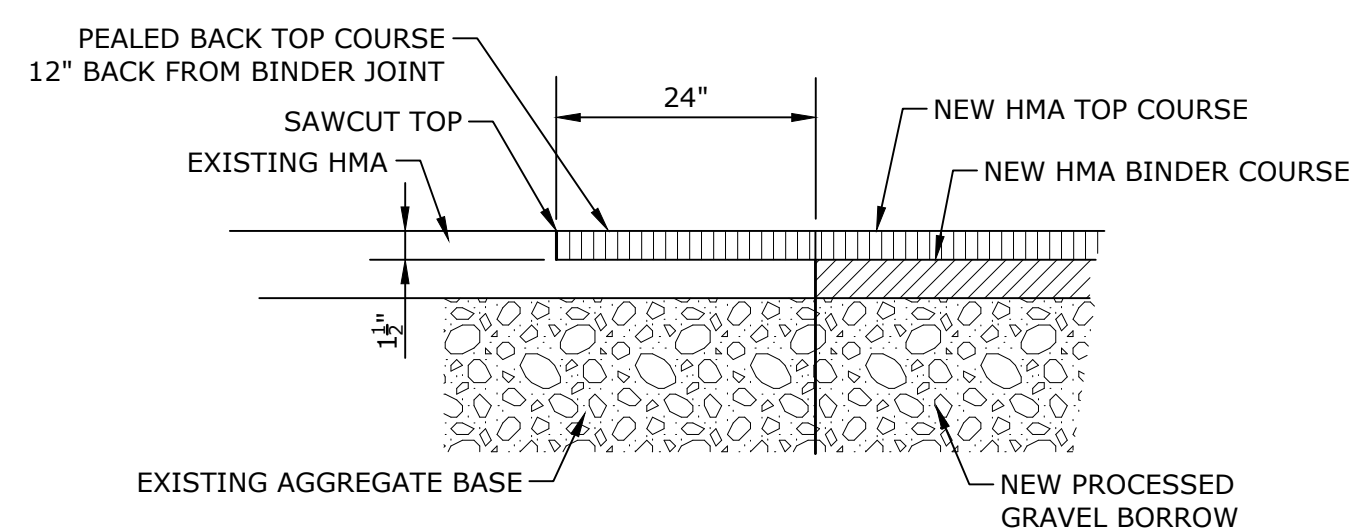
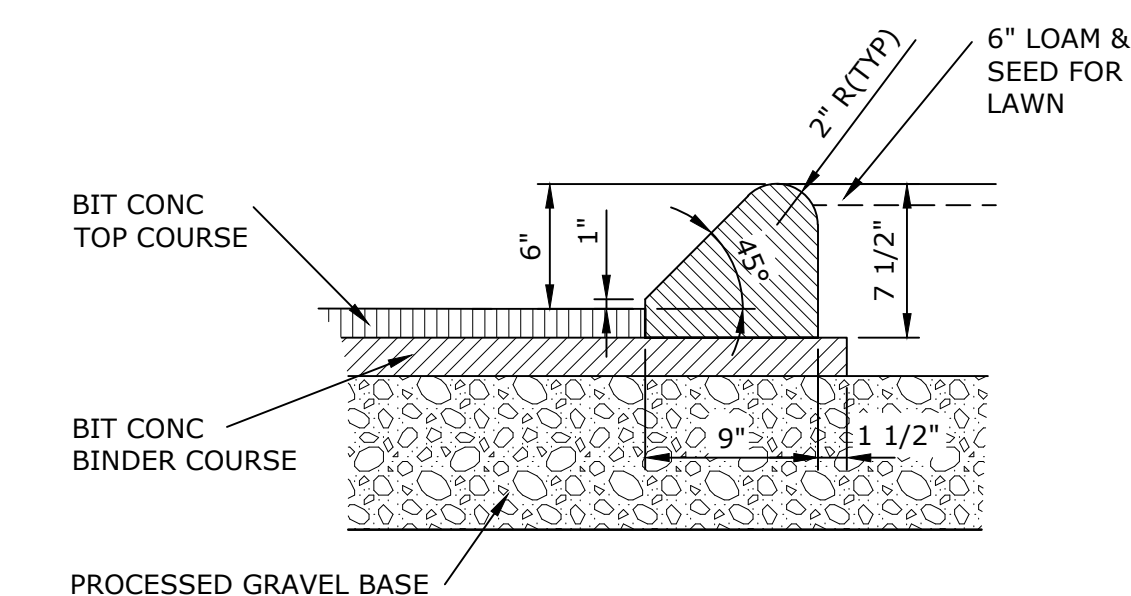
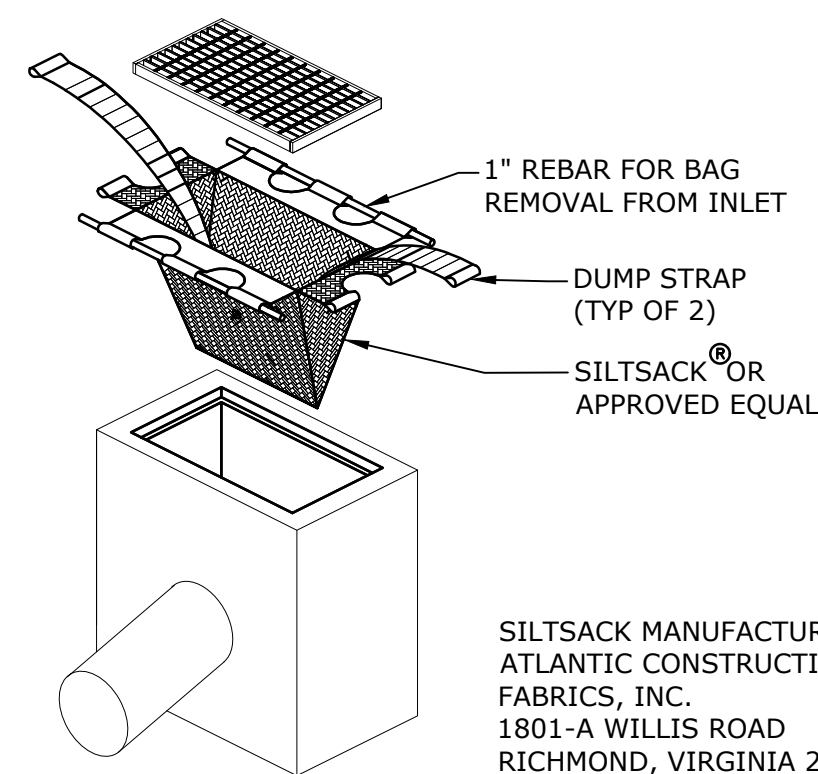
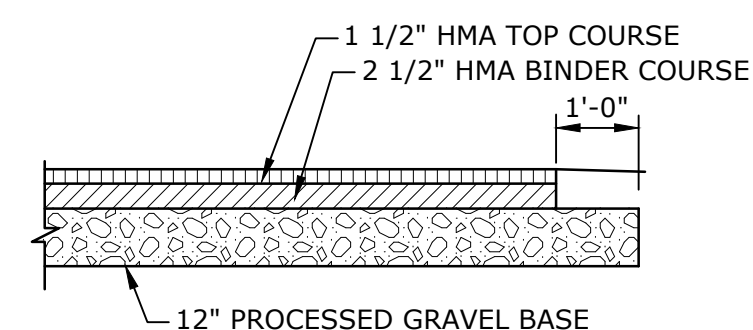
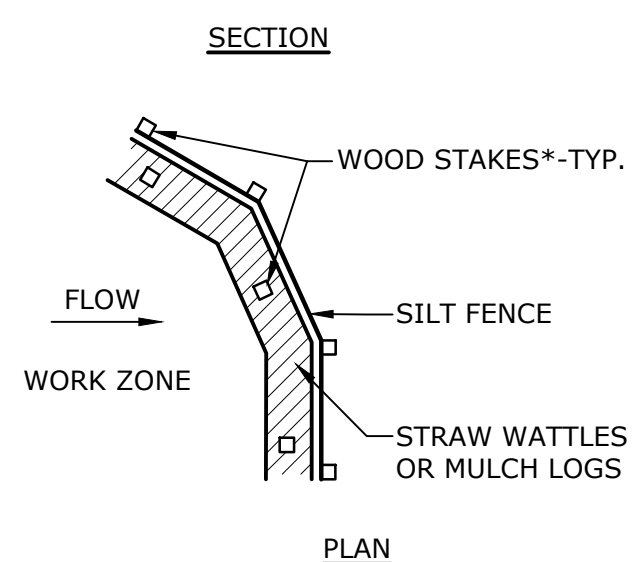
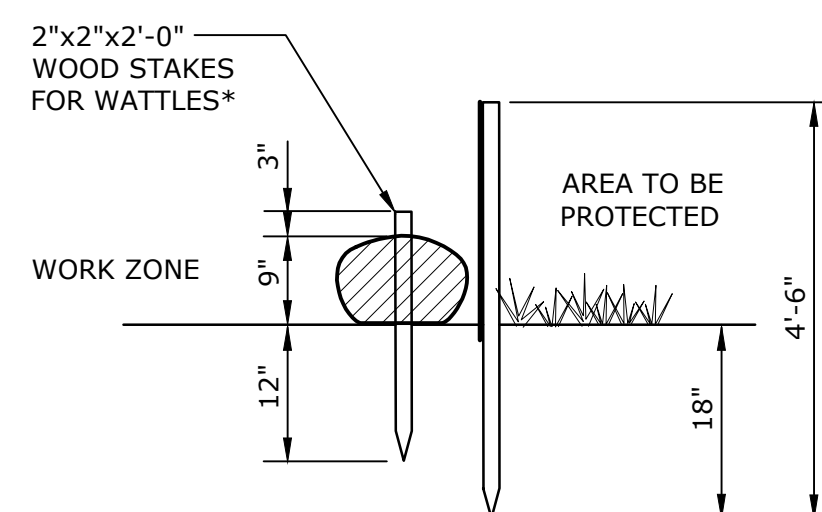
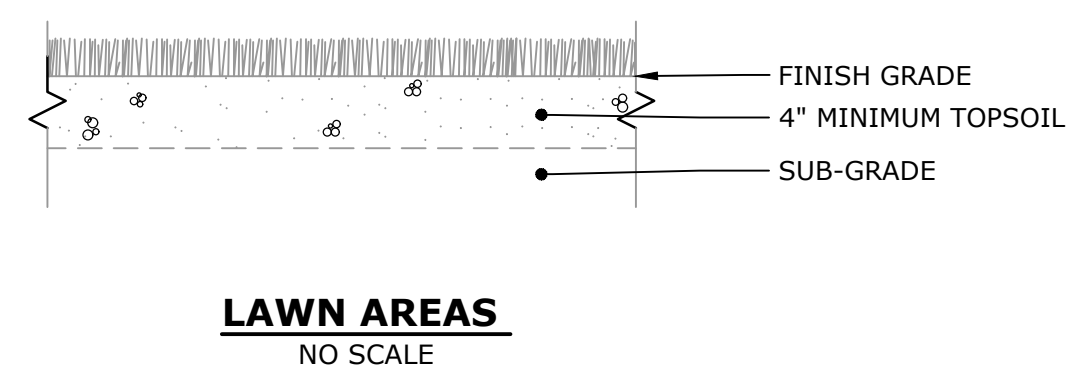
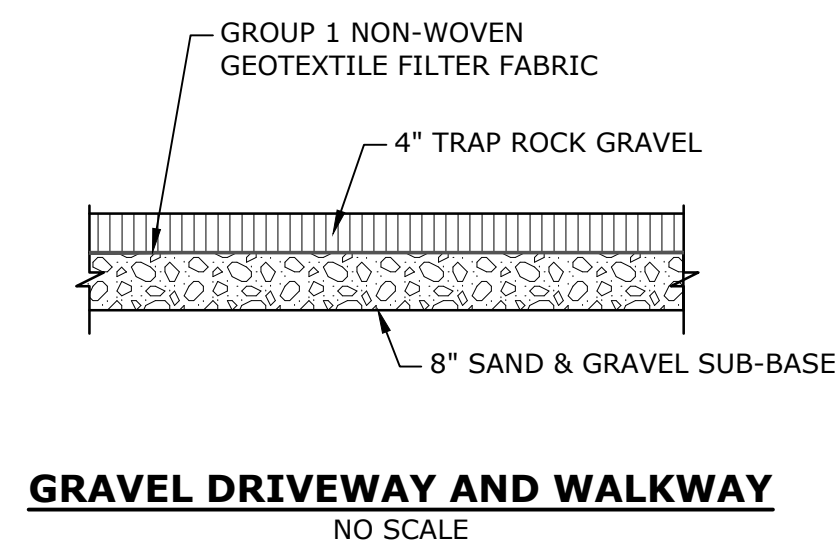
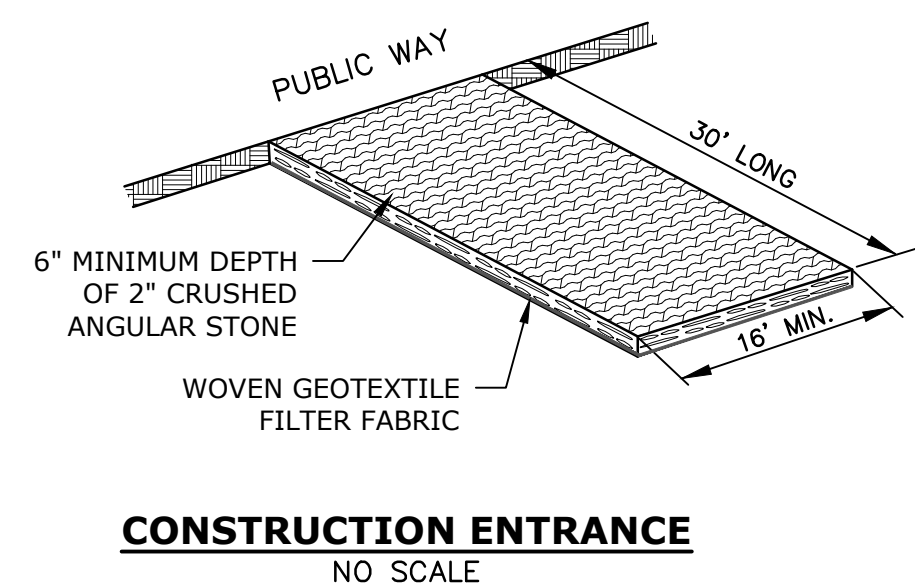
SCALE: 1" = 10'

C-106

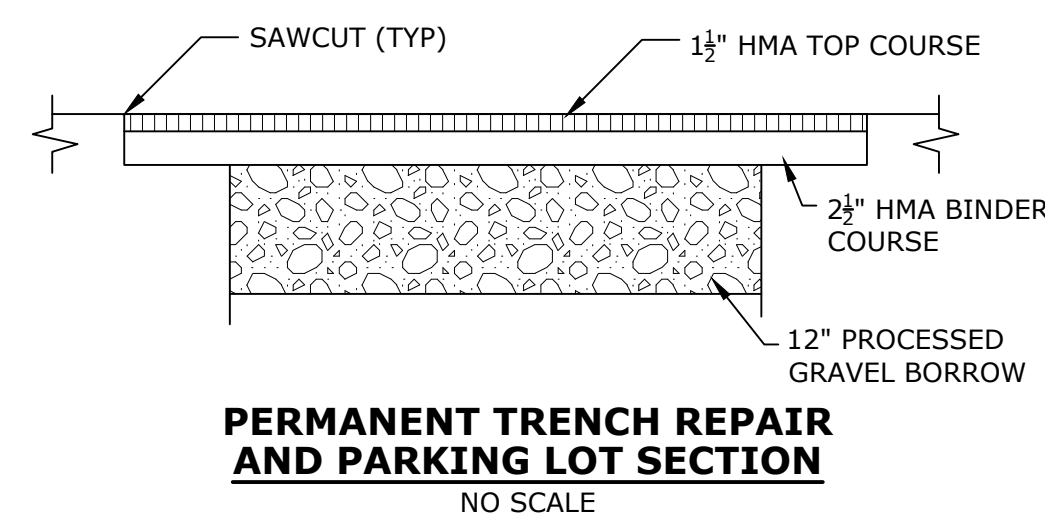
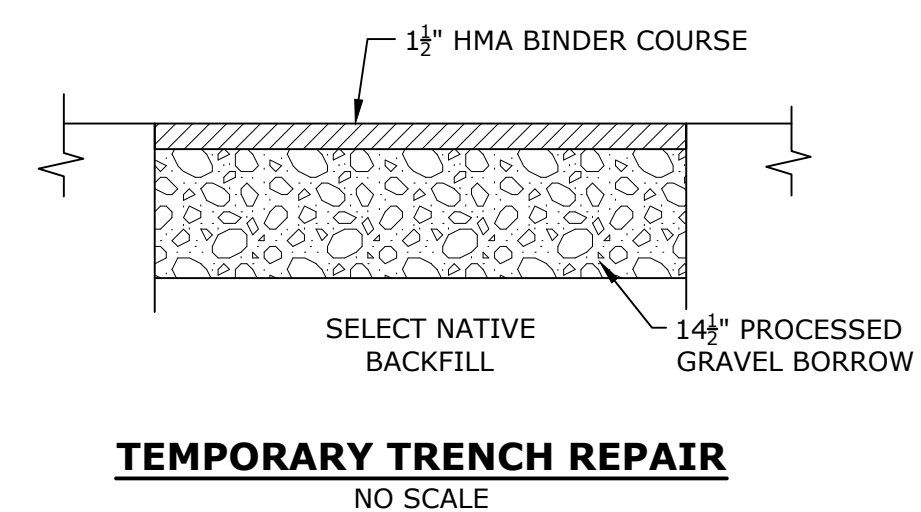
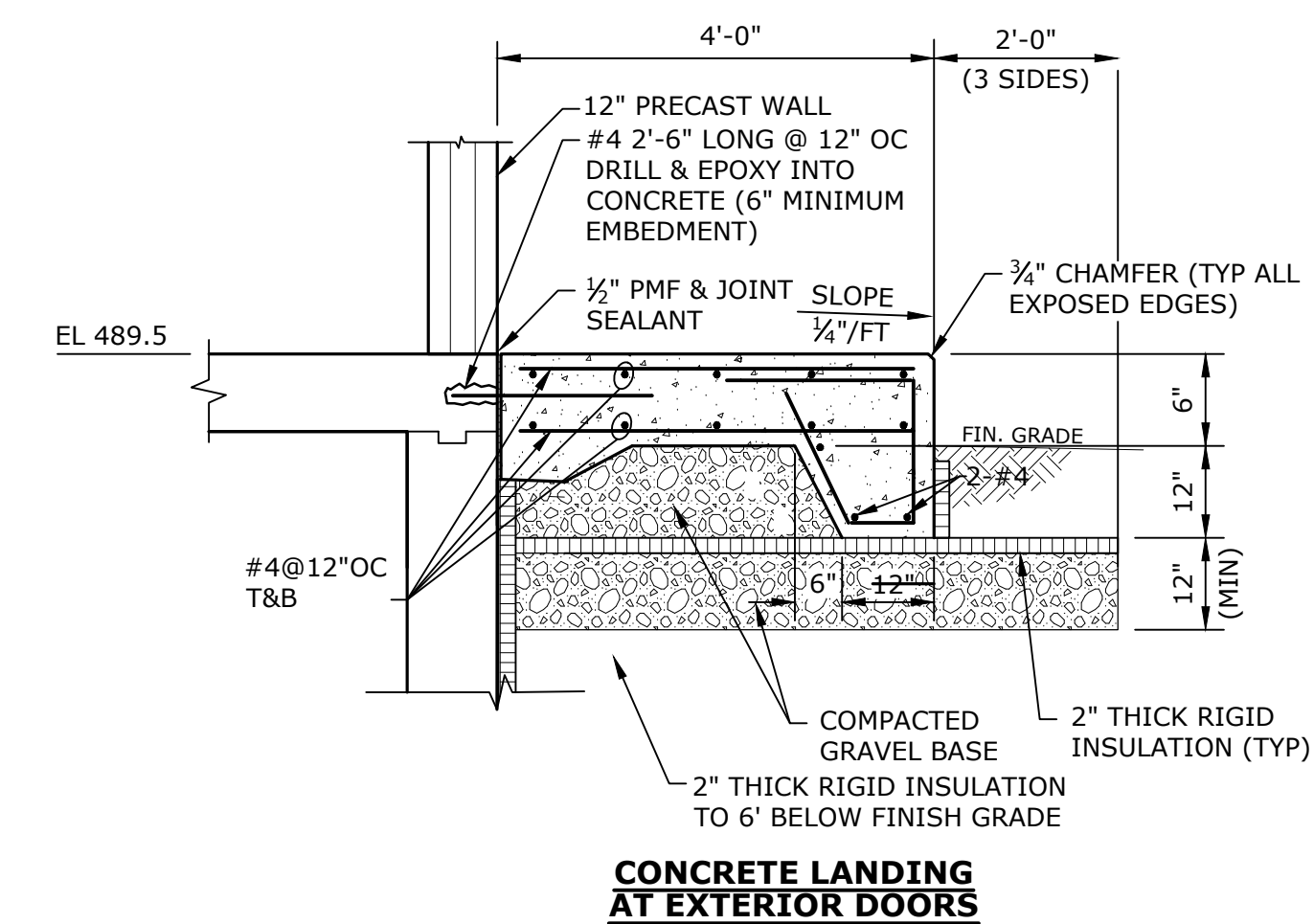
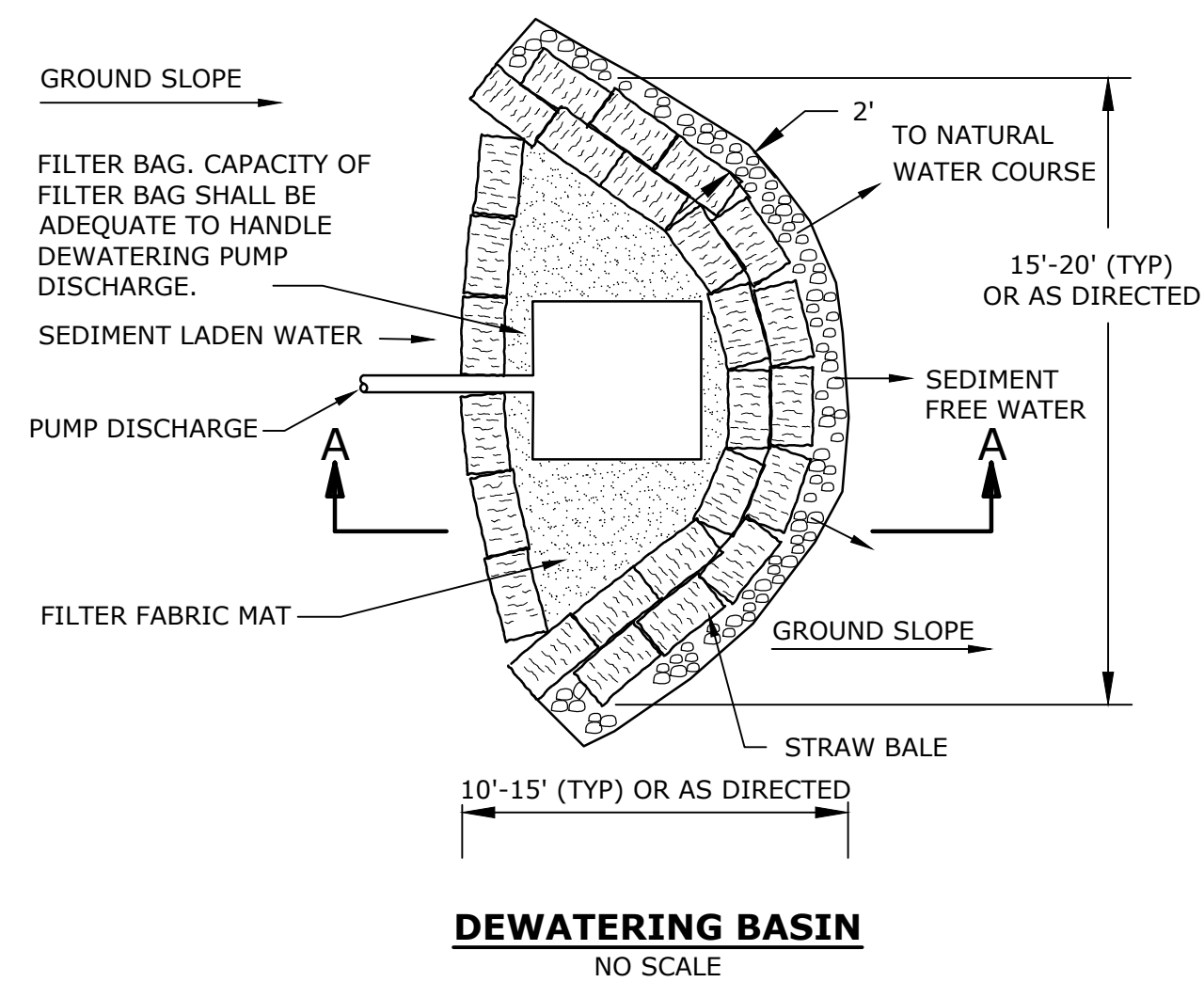
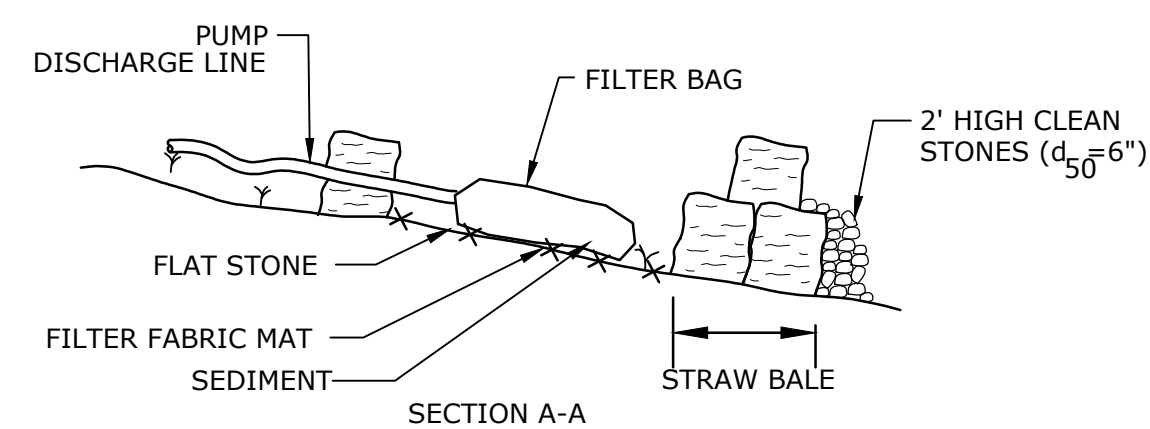


Printed On: Aug 29, 2023 2:15pm By: TWalsh  
 Plot File: \\W5002\Webster\MA\034 PFAS Water Treatment\Drawings\Figures\MemorialBeach\01-Civil\W5002-034-CS-MB-Site.dwg  
 Last Saved: 8/29/2023





- INSTALLATION NOTES:**
1. AREA CHOSEN FOR STOCKPILING OPERATIONS SHALL BE DRY AND STABLE.
  2. MAXIMUM SLOPE OF STOCKPILE SHALL BE 2H:1V.
  3. UPON COMPLETION OF SOIL STOCKPILING, EACH PILE SHALL BE SURROUNDED WITH EITHER SILT FENCING OR STRAW BALES, THEN STABILIZED WITH VEGETATION OR COVERED.



**PERMIT SET  
NOT FOR  
CONSTRUCTION**

THIS DOCUMENT IS INCOMPLETE AND IS  
RELEASED TEMPORARILY FOR PROGRESS  
REVIEW ONLY. IT IS NOT INTENDED FOR  
BIDDING OR CONSTRUCTION PURPOSES.

# MEMORIAL BEACH PFAS WTP

Webster Water  
Department

Town of Webster,  
Massachusetts

A	9/5/2023	PERMIT SET
MARK	DATE	DESCRIPTION
PROJECT NO: W5002-034-MB		
DATE: SEPTEMBER 5, 2023		
FILE: W5002-034-CS-MB-Site.dwg		
DRAWN BY: TCW		
DESIGNED/CHECKED BY: TJG/DMT		
APPROVED BY: -		

CIVIL DETAILS - 1

SCALE:	NO SCALE
--------	----------

C-501



Plotted On: Aug 29, 2023 2:15pm By: TWalsh  
 Title & Bond: \\W\5002 Webster MA\034 PFAS Water Treatment\Drawings\_Figures\MemorialBeach\01-Civil\W5002-034-CS-MB-Site.dwg  
 Last Saved: 8/29/2023





1. FRAME AND COVER SHALL BE PROVIDED FROM THE SAME MANUFACTURER.
2. LETTERING SHALL BE PROVIDED ON COVERS AS SPECIFIED.

## NO SCALE



## NO SCALE



NO SCALE

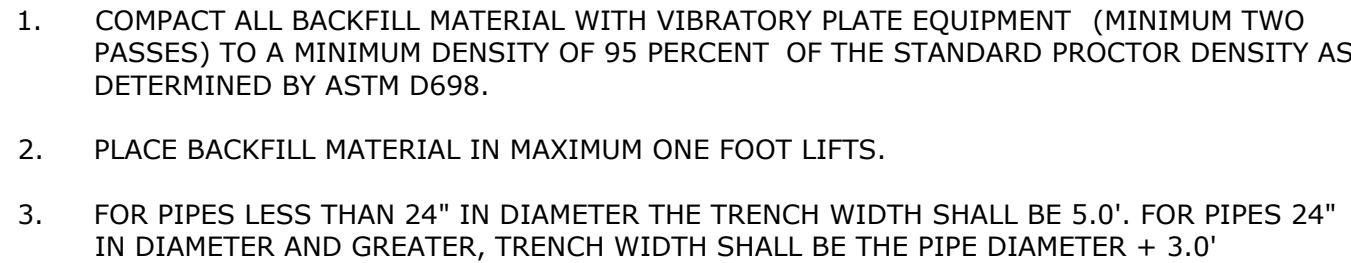
**PERMIT SET  
NOT FOR  
CONSTRUCTION**

THIS DOCUMENT IS INCOMPLETE AND IS  
RELEASED TEMPORARILY FOR PROGRESS  
REVIEW ONLY. IT IS NOT INTENDED FOR  
BIDDING OR CONSTRUCTION PURPOSES.

# MEMORIAL BEACH PFAS WTP

# Webster Water Department

Town of Webster,  
Massachusetts



## NO SCALE



## NO SCALE



## NO SCALE

**SECTION A-A**

A	9/5/2023	PERMIT SET
MARK	DATE	DESCRIPTION
PROJECT NO:	W5002-034-MB	
DATE:	SEPTEMBER 5, 2023	
FILE:	W5002-034-CS-MB-Site.dwg	
DRAWN BY:	TCW	
DESIGNED/CHECKED BY:	TJG/DMT	
APPROVED BY:	-	

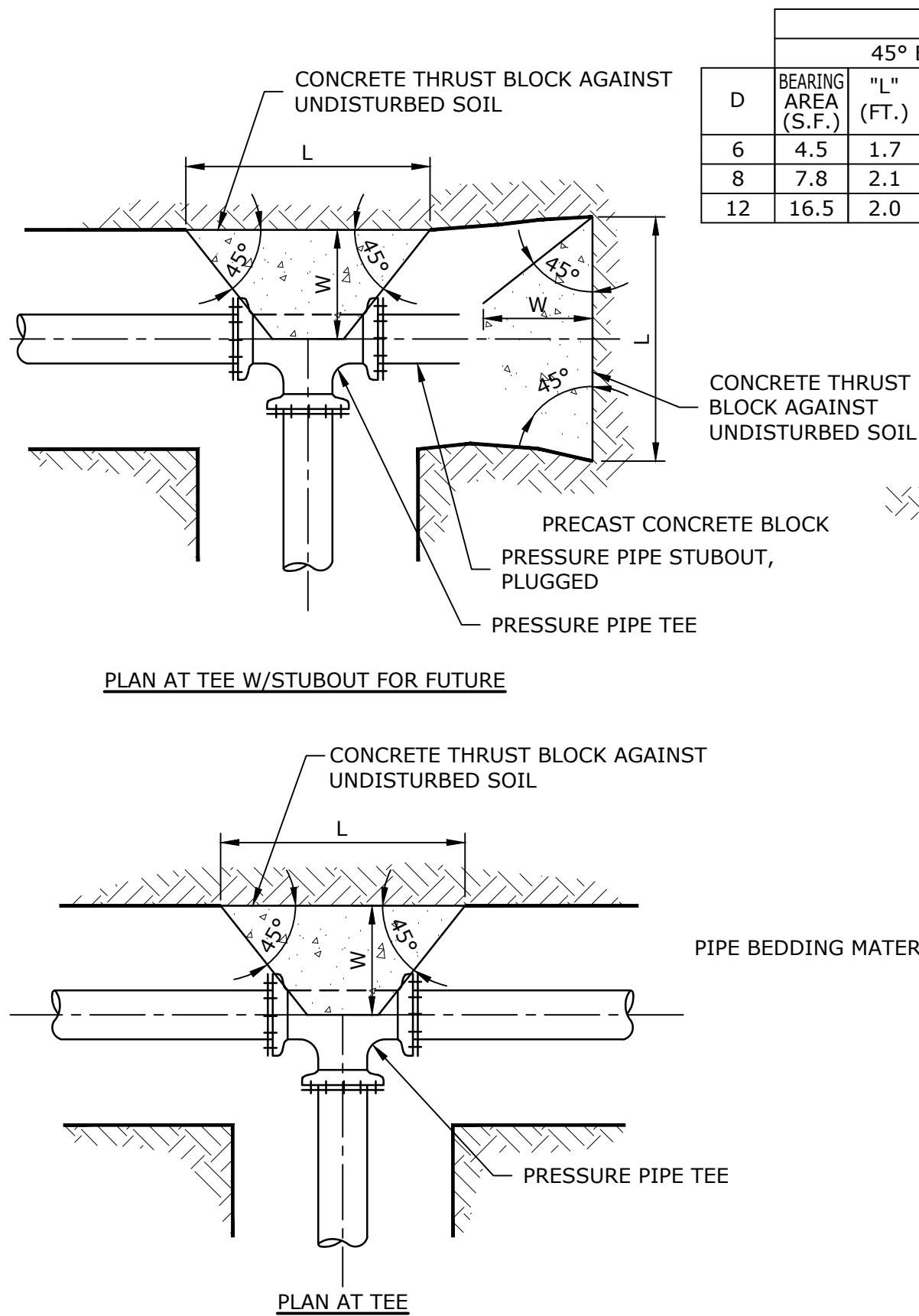
CIVIL DETAILS - 3

SCALE: NO SCALE

C-503



Last Saved: 8/29/2023 2:16pm By: TjWalsh  
Plotted On: Aug 29, 2023 2:16pm  
Tighe & Bond: J:\W5002\034-PFAS Water Treatment\Drawings - Figures\MemorialBeach\01-Civil\W5002-034-CS-MB-Site.dwg



CONCRETE THRUSTBLOCK												

- NOTES:
- DIMENSIONS SHOWN CALCULATED PER 210 PSI INTERNAL PIPE PRESSURE FOR SOIL BEARING LOADS OF 2000 PSF.
  - CONCRETE THRUST BLOCKS SHALL BE CONSTRUCTED OF CONCRETE POURED AGAINST UNDISTURBED SOIL.
  - DIMENSIONS L, W, & H MAY BE ADJUSTED TO MEET FIELD CONDITIONS PROVIDED THE BEARING AREA REMAINS UNCHANGED.
  - THE HEIGHT OF THE BLOCK (H) SHALL BE LESS THAN OR EQUAL TO HALF THE TRENCH DEPTH.
  - POLYETHYLENE SHEETING SHALL BE PLACED OVER MJ FITTINGS TO PREVENT DIRECT CONTACT BETWEEN CONCRETE AND THE FITTING.

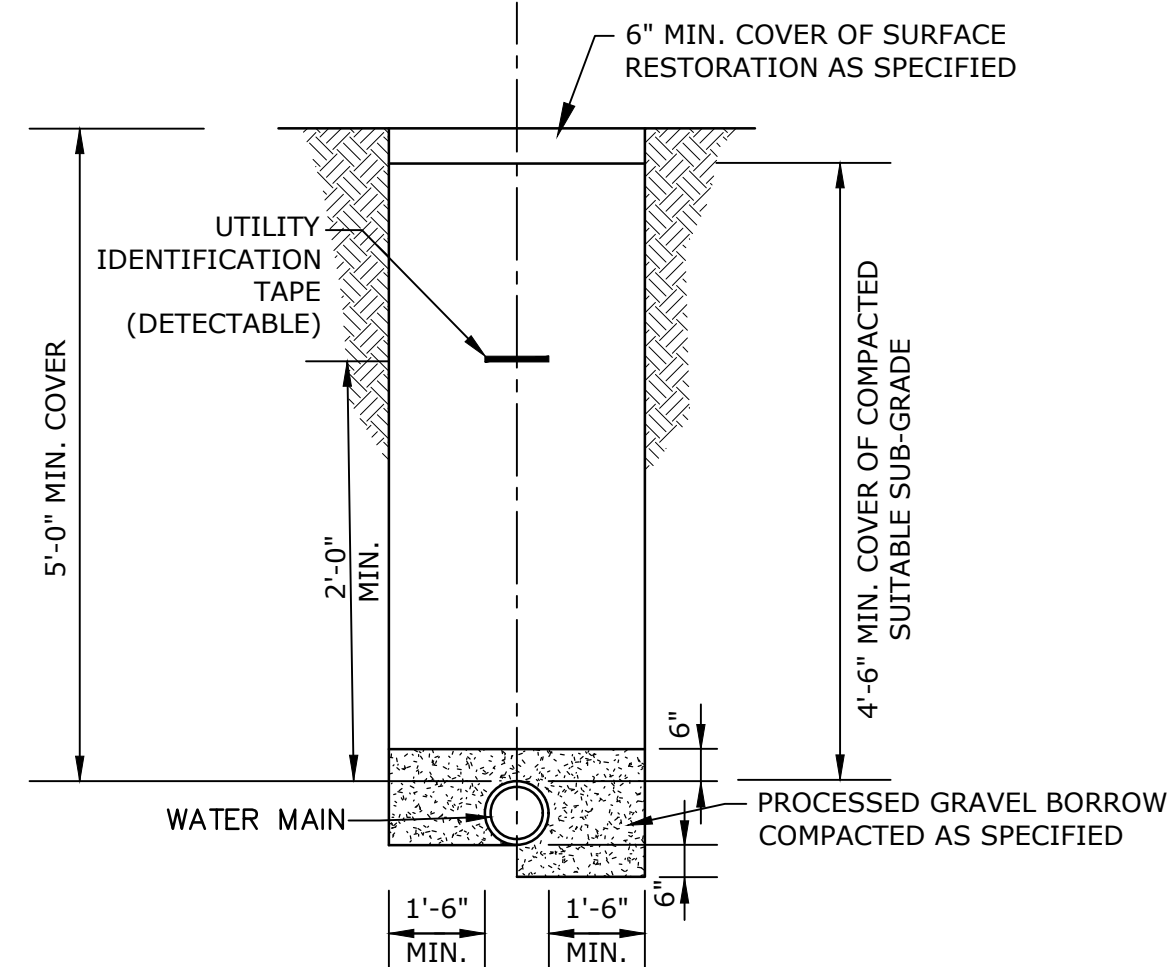
**CONCRETE THRUST BLOCK FOR HORIZONTAL BENDS AND TEES**  
NO SCALE

SIZE (IN.)	FITTING	MINIMUM* RESTRAINED LENGTH, FT. ( ) INDICATES POLYWRAPPED
12"	90° BEND	67 (78)
12"	45° BEND	28 (32)
12"	22 1/2° BEND	14 (16)
12"	11 1/4° BEND	7 (8)
12"	DEAD END	142 (203)
8"	90° BEND	47 (55)
8"	45° BEND	20 (23)
8"	22 1/2° BEND	10 (11)
8"	11 1/4° BEND	5 (6)
8"	DEAD END	100 (143)
6"	90° BEND	36 (42)
6"	45° BEND	15 (18)
6"	22 1/2° BEND	8 (9)
6"	11 1/4° BEND	4 (5)
6"	DEAD END	76 (108)

\* MINIMUM RESTRAINED LENGTH BASED ON DIPRA, "THRUST RESTRAINT DESIGN FOR DUCTILE IRON PIPE," 3rd EDITION, 1992.

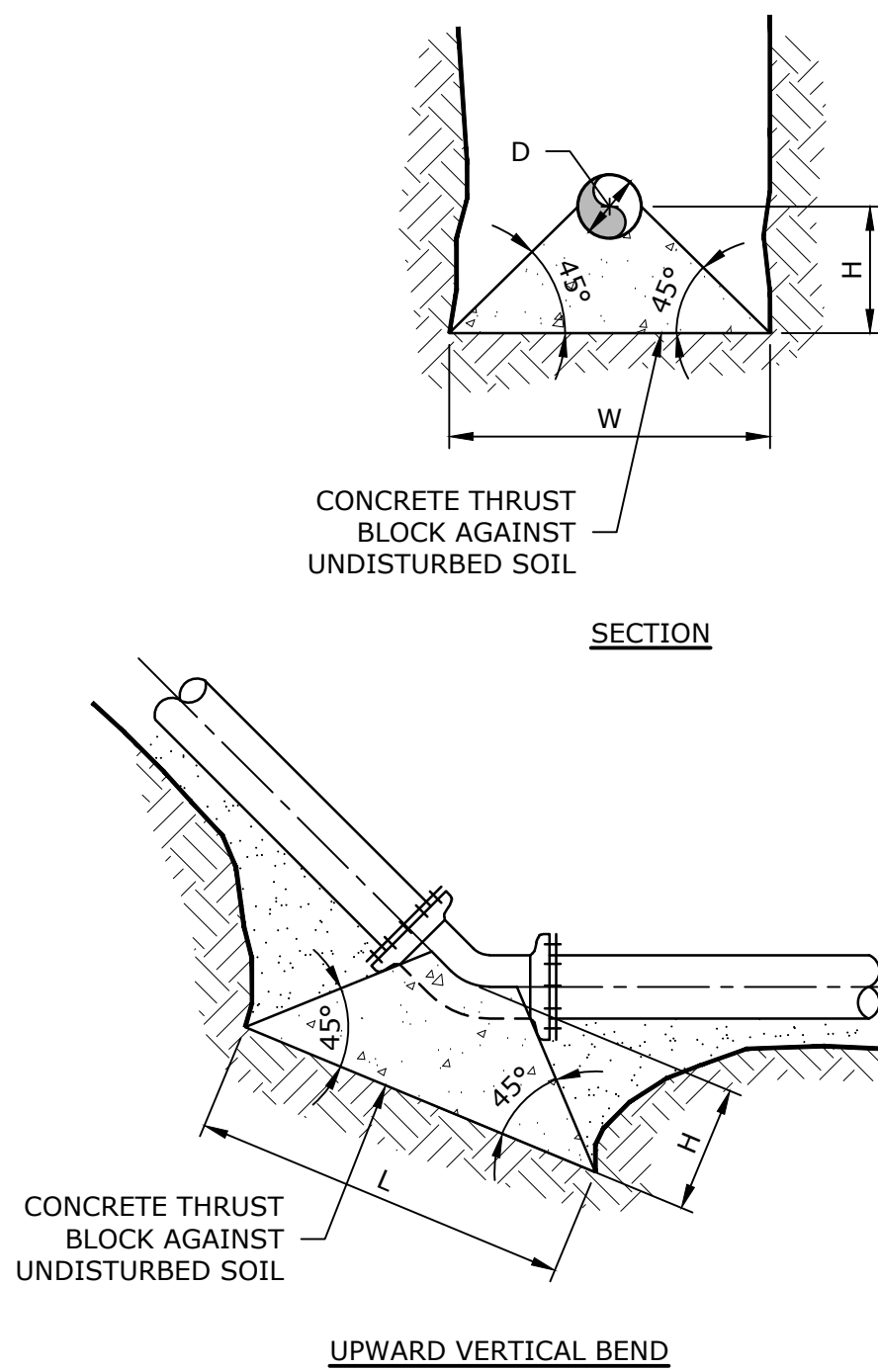
FOLLOWING CONDITIONS APPLY:  
SOIL TYPE: SAND SILT  
MAX. PRESSURE: 200psi  
LAYING CONDITIONS: TYPE 2  
BURIED DEPTH: 5'

**MINIMUM RESTRAINED LENGTHS FOR DI PIPE**



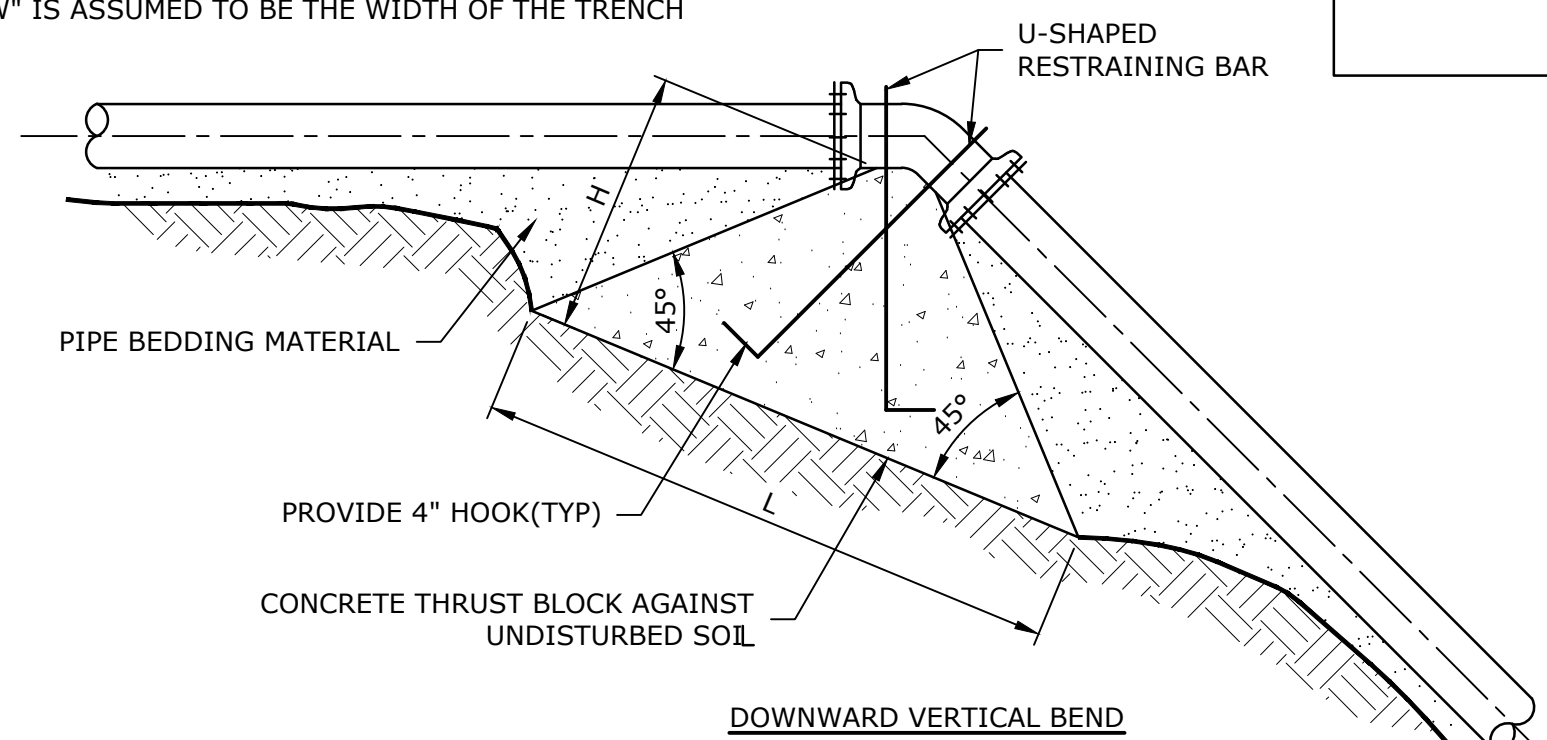
NOTE:  
ALL WATER MAIN INSTALLATIONS WILL MEET THE MINIMUM REQUIRED SETBACK DISTANCES FROM OTHER UTILITIES AND STRUCTURES.

**TYPICAL WATER MAIN TRENCH**  
NO SCALE



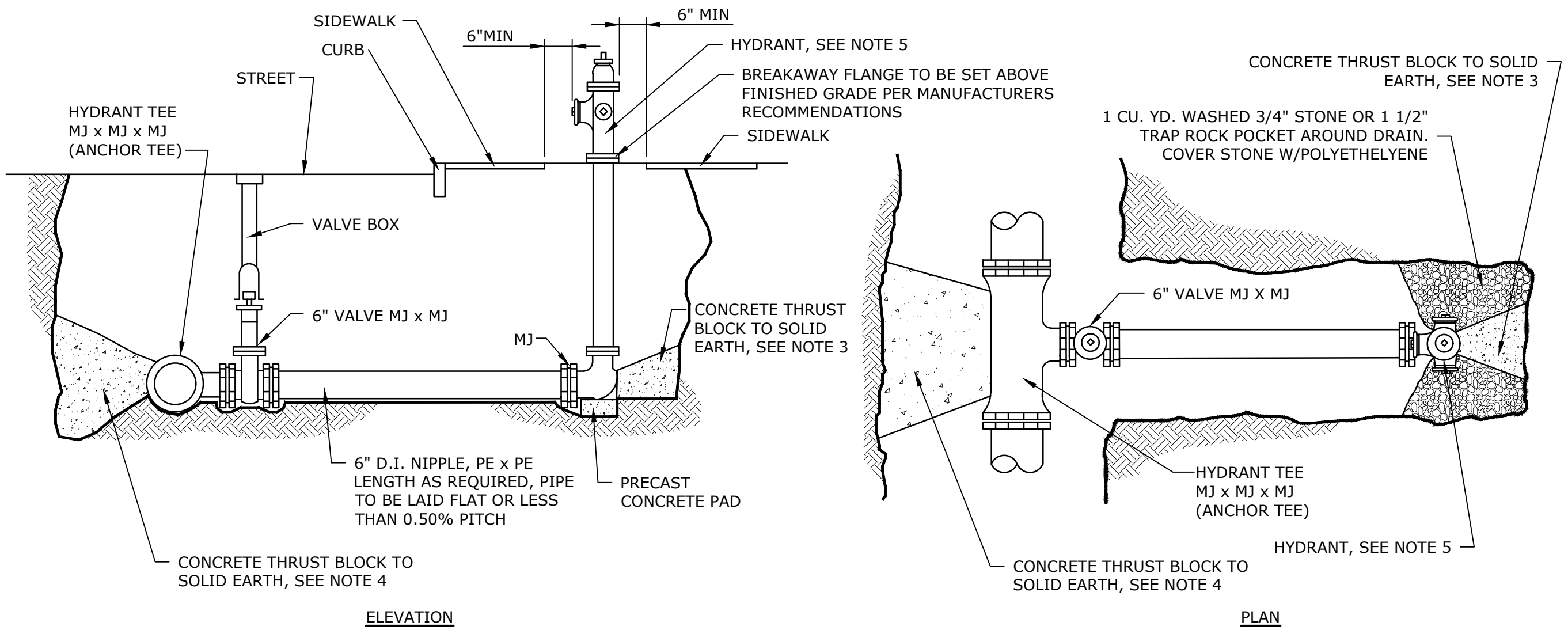
DOWNWARD VERTICAL BENDS							
D	VOLUME (C.F.)	BEARING AREA (S.F.)	H" (FT.)	L" (FT.)	W"* (FT.)	RESTRaining BAR SIZE	BAR EMBODMENT LENGTH
6	74	13.6	33	65	60	#6	24"
8	127	17.8	43	86	60	#6	24"
12	271	26.0	62	125	60	#6	24"

\* "W" IS ASSUMED TO BE THE WIDTH OF THE TRENCH



- NOTES:
- DIMENSIONS SHOWN CALCULATED FOR 210 PSI INTERNAL PIPE PRESSURE, SOIL BEARING LOADS OF 2000 PSF, BASED ON A 45° BEND.
  - CONCRETE THRUST BLOCKS SHALL BE CONSTRUCTED OF CONCRETE MATERIAL POURED AGAINST UNDISTURBED SOIL.
  - DIMENSIONS L, W, & H MAY BE ADJUSTED TO MEET FIELD CONDITIONS, PROVIDED THE BEARING AREA AND VOLUME REMAIN UNCHANGED.
  - RESTRAINING BARS SHALL BE ASTM A615 GRADE 60 REINFORCING STEEL.
  - THE PORTION OF THE RESTRAINING BARS EXPOSED TO SOIL SHALL BE COATED WITH TWO COATS OF BITUMASTIC MATERIAL.
  - POLYETHYLENE SHEETING SHALL BE PLACED OVER MJ FITTINGS TO PREVENT DIRECT CONTACT BETWEEN CONCRETE AND THE FITTING.

**CONCRETE THRUST BLOCK FOR VERTICAL BENDS**  
NO SCALE



- NOTES
- ALL CONCRETE TO BE CAST-IN-PLACE (3000 PSI)
  - ALL MJ JOINTS SHALL HAVE RETAINER GLANDS
  - CARE SHALL BE TAKEN TO SHIELD HYDRANT BASE DRAIN HOLES DURING PLACEMENT OF THE CONCRETE THRUST BLOCK. DRAIN HOLES SHALL BE VERIFIED AS OPEN AND FREE OF OBSTRUCTIONS PRIOR TO BACKFILLING.
  - CARE SHALL BE TAKEN TO SHIELD ALL MECHANICAL JOINT GLANDS AND BOLTS DURING PLACEMENT OF CONCRETE THRUST BLOCK. ALL BOLTS AND GLANDS SHALL BE FREE AND UNOBSTRUCTED BEFORE BACKFILLING.
  - HYDRANT SHALL BE SET PLUMB. VERTICAL HYDRANT EXTENSIONS SHALL BE USED AS NECESSARY TO PROPERLY LOCATE THE BREAKAWAY FLANGE PER MANUFACTURERS RECOMMENDATIONS.
  - POLYETHYLENE SHEETING SHALL BE PLACED OVER THE FITTING AND/OR HYDRANT BASE TO PREVENT DIRECT CONTACT OF CONCRETE WITH THE FITTING.

**HYDRANT INSTALLATION**  
NO SCALE

**Tighe&Bond**

**PERMIT SET NOT FOR CONSTRUCTION**

THIS DOCUMENT IS INCOMPLETE AND IS RELEASED TEMPORARILY FOR PROGRESS REVIEW ONLY. IT IS NOT INTENDED FOR BIDDING OR CONSTRUCTION PURPOSES.

**MEMORIAL BEACH PFAS WTP**

Webster Water Department

Town of Webster, Massachusetts

MARK	DATE	DESCRIPTION
A	9/5/2023	PERMIT SET
DATE	DATE	DESCRIPTION
PROJECT NO:	W5002-034-MB	
DATE:	SEPTEMBER 5, 2023	
FILE:	W5002-034-CS-MB-Site.dwg	
DRAWN BY:	TCW	
DESIGNED/CHECKED BY:	TJG/DMT	
APPROVED BY:	-	

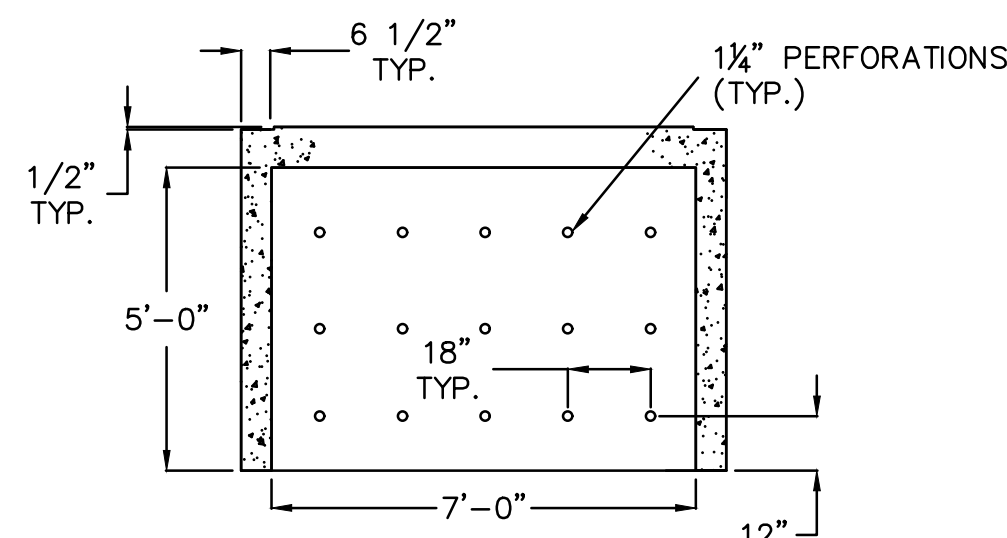
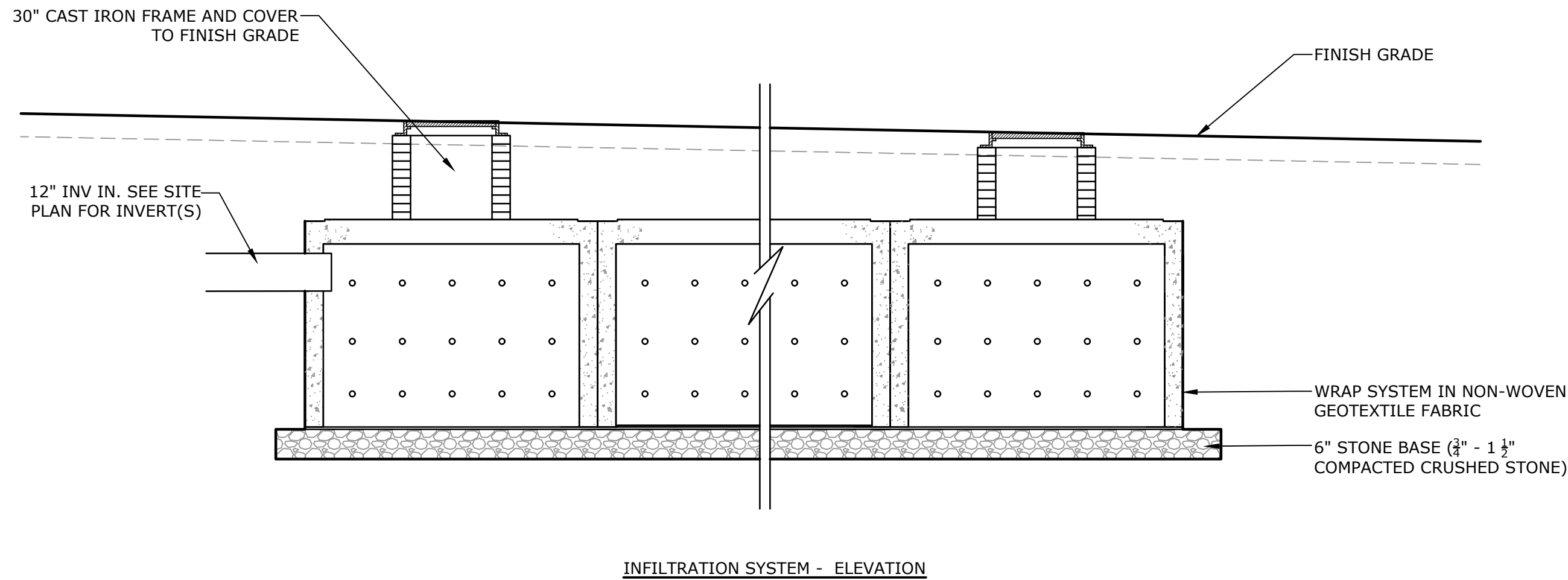
CIVIL DETAILS - 4

SCALE: NO SCALE

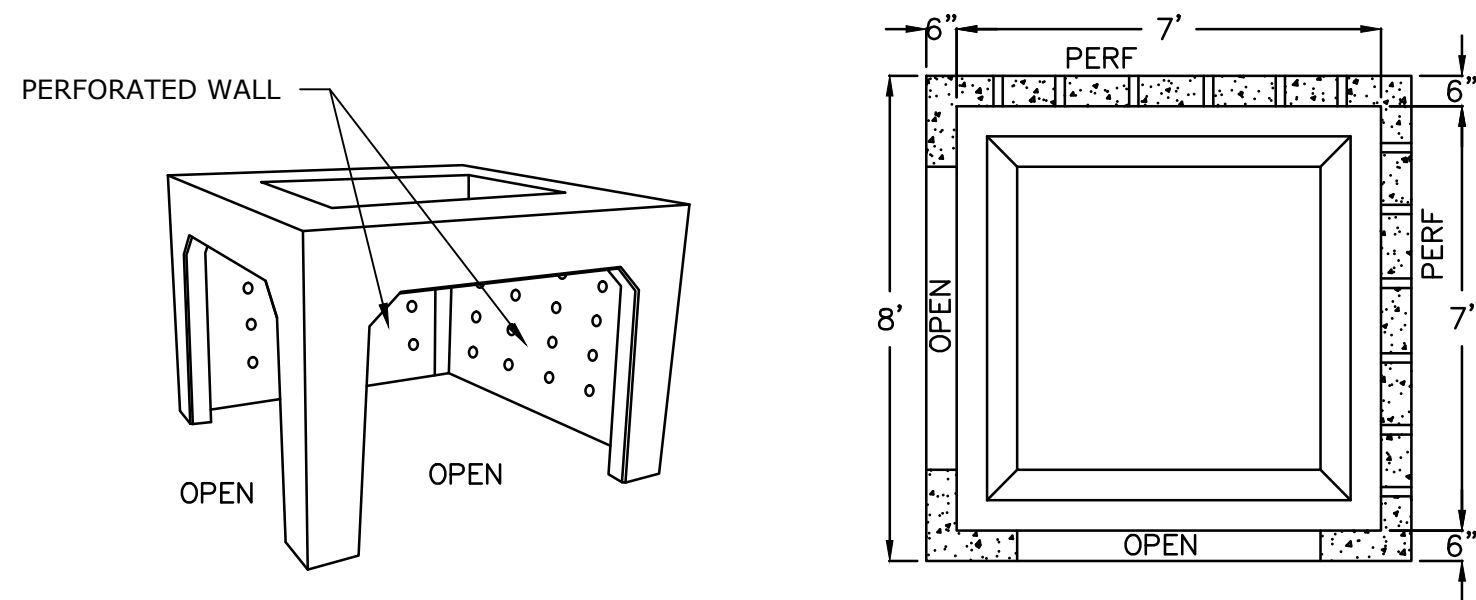
C-504



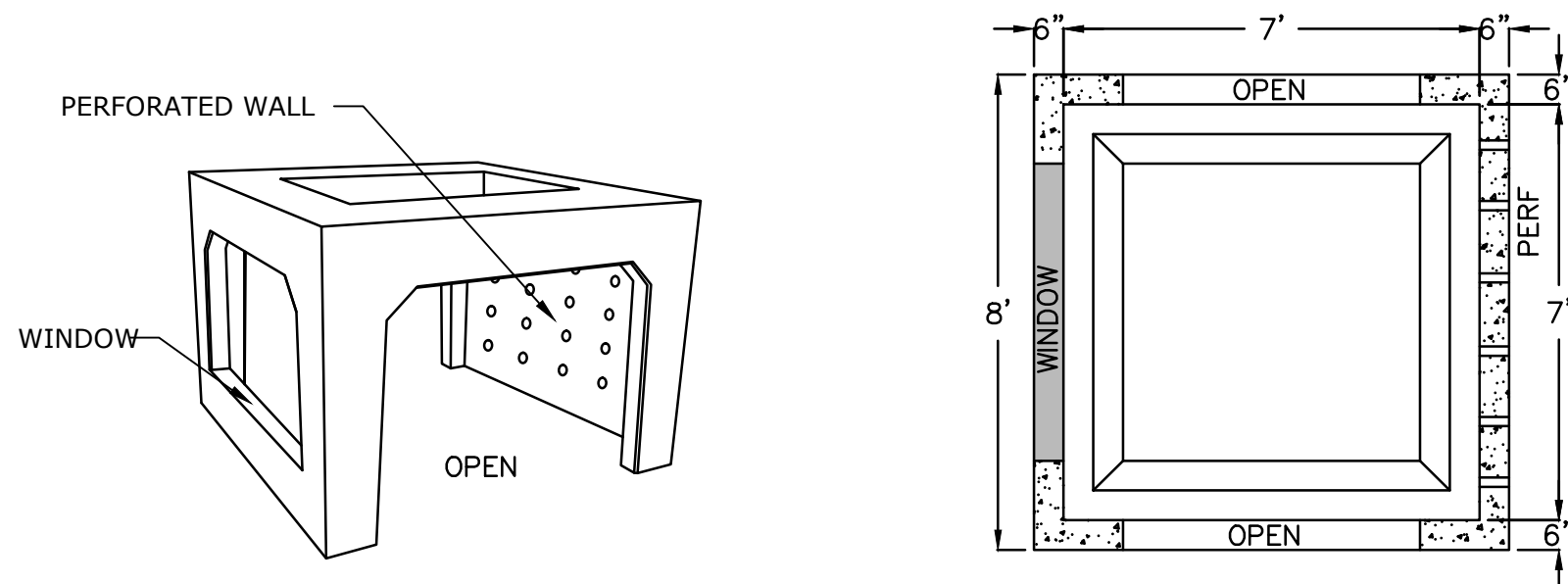
Last Saved: 8/29/2023 2:16pm By: TjWalsh  
Plotted On: Aug 29, 2023 2:16pm By: TjWalsh  
Tighe & Bond: J:\W5002\034-PFAS Water Treatment\Drawings - Figures\MemorialBeach\01-Civil\W5002-034-CS-MB-Site.dwg



- ASTM SPECIFICATIONS:
1. CONCRETE - 5,000 PSI, 28 DAYS
  2. REINFORCING STEEL CONFORMS TO LATEST ASTM A615
  3. H-20 DESIGN LOADING PER AASHTO HS-20-44



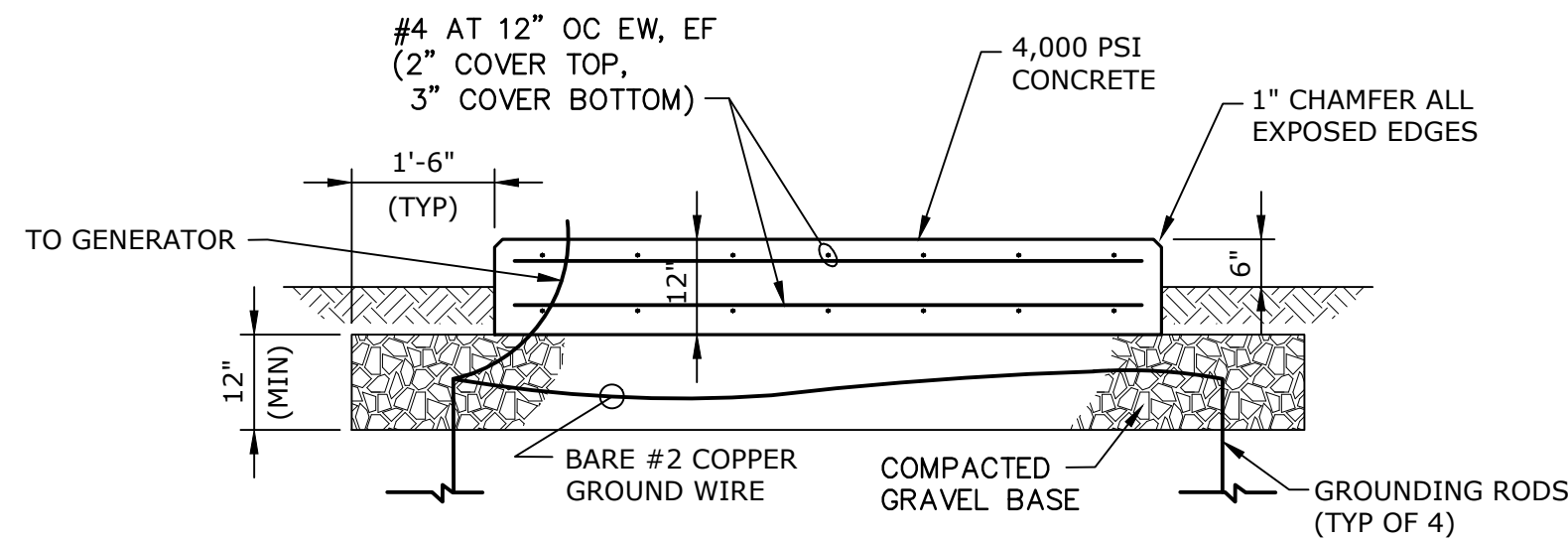
MULTI ROW CORNER CHAMBER



MULTI ROW PERIMETER CHAMBER

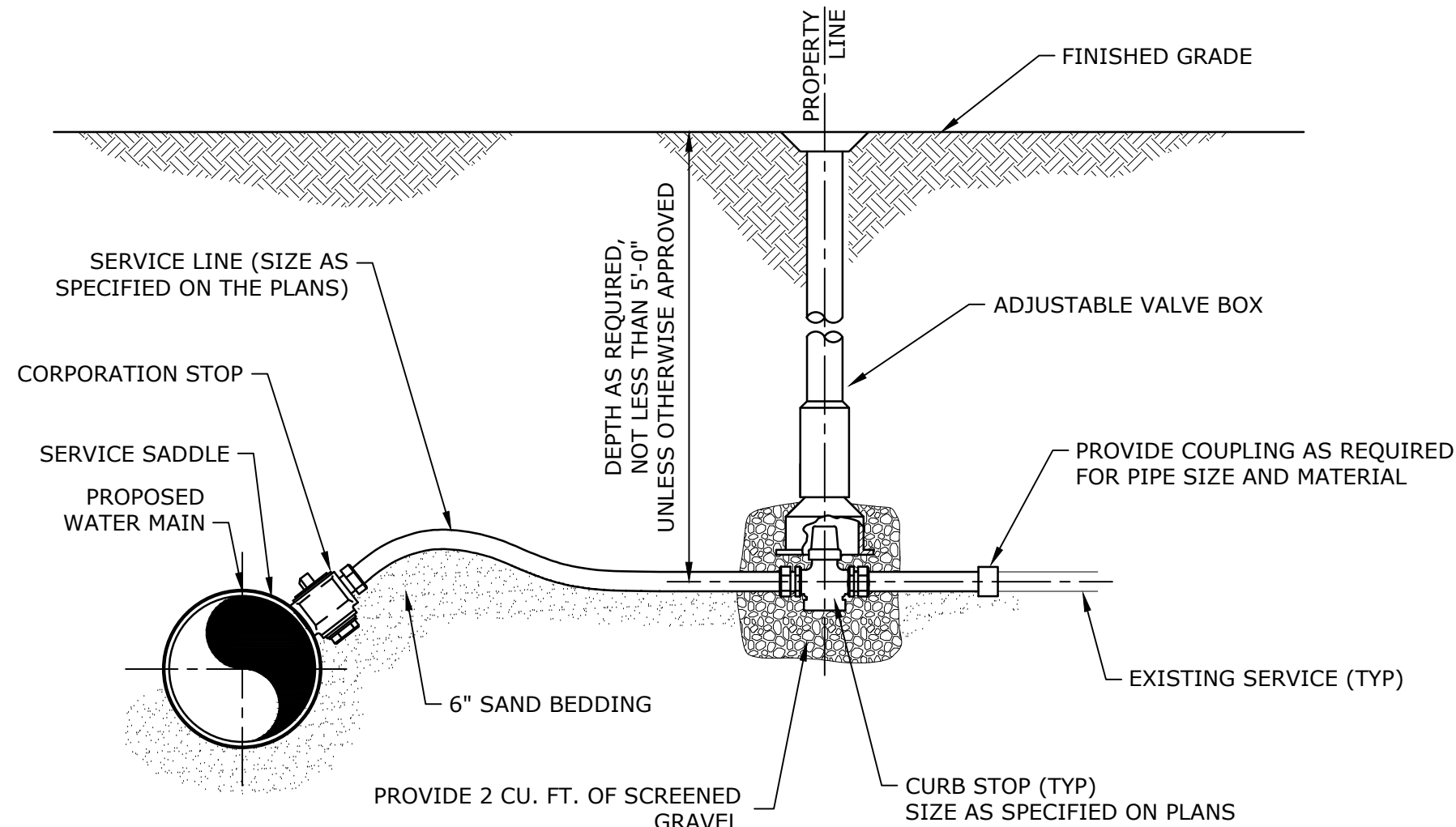
**PRECAST CONCRETE INFILTRATION CHAMBERS**

NO SCALE



**CONCRETE GENERATOR PAD**

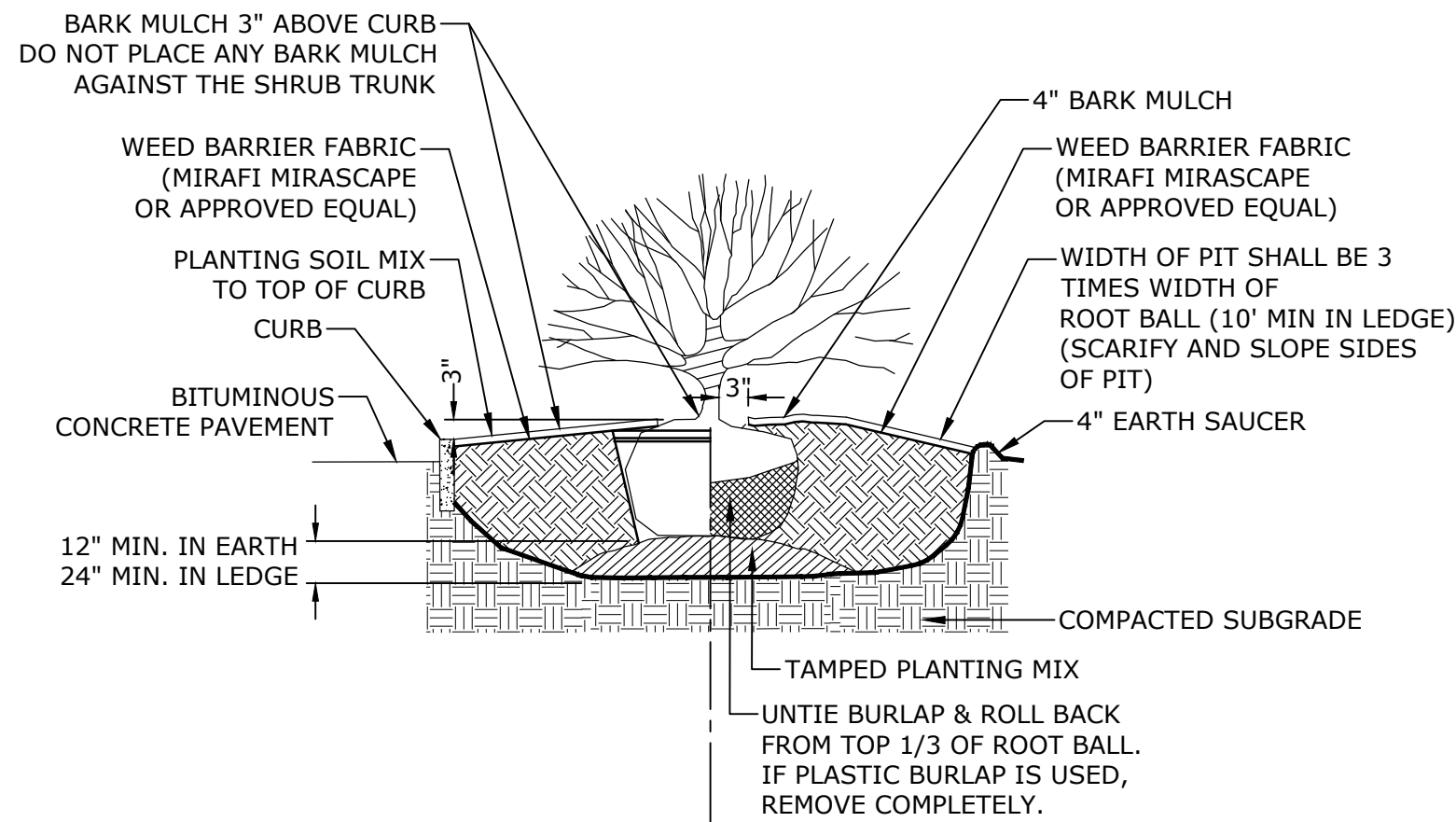
NO SCALE



- NOTES:
1. SERVICE CONNECTION LOCATIONS TO BE FIELD VERIFIED.
  2. PROVIDE SERVICES AT ALL PROPERTIES UNLESS OTHERWISE APPROVED. LOCATIONS TO BE FIELD LOCATED WITH TOWN OF WEBSTER.

**WATER SERVICE CONNECTION**

NO SCALE



**SHRUB PLANTING DETAIL**

NO SCALE

**Tighe&Bond**

**PERMIT SET  
NOT FOR  
CONSTRUCTION**

THIS DOCUMENT IS INCOMPLETE AND IS RELEASED TEMPORARILY FOR PROGRESS REVIEW ONLY. IT IS NOT INTENDED FOR BIDDING OR CONSTRUCTION PURPOSES.

**MEMORIAL  
BEACH PFAS  
WTP**

Webster Water  
Department

Town of Webster,  
Massachusetts

MARK	DATE	DESCRIPTION
A	9/5/2023	PERMIT SET
PROJECT NO: W5002-034-MB		
DATE: SEPTEMBER 5, 2023		
FILE: W5002-034-CS-MB-Site.dwg		
DRAWN BY: TCW		
DESIGNED/CHECKED BY: TJG/DMT		
APPROVED BY: -		

CIVIL DETAILS - 5

SCALE: NO SCALE

C-505

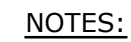
# MEMORIAL BEACH PFAS WTP

Town of Webster,  
Massachusetts

A MARK	9/5/2023 DATE	PERMIT SET DESCRIPTION
PROJECT NO:		W5002-034-MB
DATE:		SEPTEMBER 5, 2023
FILE:		W5002-034-CS-MB-Site.dwg
DRAWN BY:		TCW
DESIGNED/CHECKED BY:		TJG/DMT
APPROVED BY:		-

SCALE: NO SCALE

Last Saved: 8/29/2023  
Plotted On: Aug 29, 2023  
Tighe & Bond: J:\W\W5



1. WELL CASING SHALL BE CUT AND CAPPED, A PITLESS ADAPTER SHALL BE INSTALLED AT CENTERLINE OF DISCHARGE AT 5'-6" BELOW LOCAL GROUND ELEVATION.
2. THE PITLESS ADAPTER SHALL BE SIZED IN ACCORDANCE WITH THE MANUFACTURER'S RECOMMENDATIONS.
3. THE FINISHED GRADE FOR A RADIUS OF 5 FEET AROUND THE WELL CASING SHALL BE FILLED WITH A HIGH CLAY CONTENT LOAM TO A SLOPE OF ABOUT ONE INCH PER FOOT, COMPACTED, FINE GRADED AND SEEDED.
4. CONTRACTOR SHALL PROVIDE A 1.5" PVC STILLING WELL TUBE WITHIN THE WELL FOR THE WELL LEVEL TRANSDUCER.

**WELLHEAD PITLESS ADAPTER CONNECTION  
AND GRAVEL PACKED WELL 2A DETAIL**  
NO SCALE



1. DO NOT SCALE PLANS. FIELD VERIFY AND COORDINATE ALL DIMENSIONS AND CONDITIONS SHOWN. REPORT ANY DISCREPANCIES OR DEVIATIONS TO THE ENGINEER.
2. LAY OUT NEW PARTITIONS FOR THE ENGINEER'S REVIEW PRIOR TO ROUGH FRAMING OF WALLS. VERIFY COLUMN LOCATIONS AND COORDINATE WITH PARTITION LAYOUT.
3. DIMENSIONS ARE FROM FACE OF MASONRY OR FACE OF STUD UNLESS NOTED OTHERWISE.
4. SEE ACCESSIBILITY STANDARDS ON GENERAL ARCHITECTURAL SHEETS FOR CLEARANCES AND MOUNTING HEIGHTS OF TYPICAL ELEMENTS AND ACCESSORIES.
5. ACCESSIBILITY CLEARANCES ON ACCESSIBLE ROUTES AND ACCESSIBLE DESIGNATED RESTROOMS SHALL TAKE PRECEDENCE OVER OTHER DIMENSIONS UNLESS NOTED OTHERWISE.
6. AT PENETRATIONS THROUGH FIRE RATED ASSEMBLIES, PROVIDE ADDITIONAL BLOCKING, FIRESTOPPING, AND/OR FIRESEALING AT BOTH SIDES OF THE ASSEMBLY TO MAINTAIN FIRE RATING REQUIRED BY CODE.
7. PROVIDE ACCESS PANELS AS REQUIRED AT WALL AND CEILING LOCATIONS FOR ACCESS TO DUCTWORK, PIPING VALVES, CLEANOUTS, AND OTHER CONCEALED ITEMS FOR MAINTENANCE. WHERE ACCESS PANELS ARE REQUIRED IN FIRE RATED ASSEMBLIES, PROVIDE FIRE RATED ACCESS PANELS OF EQUAL RATING TO THE ASSEMBLY. COORDINATE LOCATIONS WITH STRUCTURAL, HVAC, AND MEP DRAWINGS.
8. USE ELECTRICAL DRAWINGS FOR LOCATIONS OF SURFACE MOUNTED AND CONCEALED WIRING (CONDUITS, JUNCTION BOXES, ETC.) COORDINATE WITH INSTALLATION OF OTHER SYSTEMS AND ROOM FINISHES AS REQUIRED.
9. PROVIDE BLOCKING WHERE REQUIRED FOR WALL MOUNTED CABINETS, SHELVES, TOILET ACCESSORIES, AND FIXTURE COMPONENTS. COORDINATE BLOCKING LOCATIONS WITH THE ARCHITECTURAL FLOOR PLANS, INTERIOR ELEVATIONS, AND ACCESSIBILITY REQUIREMENTS DEMONSTRATED IN THE ARCHITECTURAL GENERAL DRAWINGS.
10. PROVIDE SEPARATION AT DISSIMILAR METALS AND MATERIALS TO PREVENT GALVANIC ACTION.
11. PAINT EXPOSED SURFACES EXCEPT WHERE FINISH SCHEDULES INDICATE THAT A SURFACE OR MATERIAL IS NOT TO BE PAINTED OR IS TO REMAIN UNFINISHED. IF THE FINISH SCHEDULE DOES NOT SPECIFICALLY MENTION AN ITEM OR SURFACE, FINISH THE ITEM OR SURFACE TO MATCH SIMILAR ADJACENT MATERIALS.
12. ALL STRUCTURAL, M/E/P, HVAC, AND FP SYSTEMS SHOWN ON THE ARCHITECTURAL DRAWINGS ARE DEPICTED FOR GENERAL REPRESENTATION AND SHALL NOT TAKE PRECEDENCE OVER THE ENGINEER'S DRAWINGS. THE PROJECT ARCHITECT SHALL NOTIFY THE ENGINEER IF DISCREPANCIES EXIST BETWEEN THE ARCHITECTURAL AND ENGINEERING DRAWINGS.
13. SEE ALTERNATES SCHEDULE IN THE SPECIFICATIONS FOR ADDITIONAL WORK DESCRIPTIONS.

THIS DOCUMENT IS INCOMPLETE AND IS  
RELEASED TEMPORARILY FOR PROGRESS  
REVIEW ONLY. IT IS NOT INTENDED FOR  
BIDDING OR CONSTRUCTION PURPOSES.

Webster Water  
Department

Town of Webster,  
Massachusetts

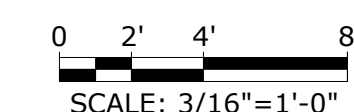
A	9/5/2023	PERMIT SET
MARK	DATE	DESCRIPTION
PROJECT NO:		W5002-034-MB
DATE:		SEPTEMBER 5, 2023
FILE:		W5002-034-MB-A-101
DRAWN BY:		AH - MI
DESIGNED/CHECKED BY:		MI
APPROVED BY:		-

SCALE: AS SHOWN

A-101


$$3/16" = 1'-0"$$

1



THIS DOCUMENT IS INCOMPLETE AND IS  
RELEASED TEMPORARILY FOR PROGRESS  
REVIEW ONLY. IT IS NOT INTENDED FOR  
BIDDING OR CONSTRUCTION PURPOSES.

# Webster Water Department


## BUILDING ELEVATIONS

A-201





THIS DOCUMENT IS INCOMPLETE AND IS  
RELEASED TEMPORARILY FOR PROGRESS  
REVIEW ONLY. IT IS NOT INTENDED FOR  
BIDDING OR CONSTRUCTION PURPOSES.

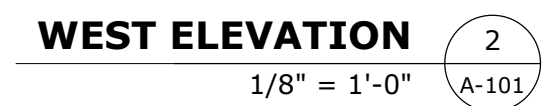
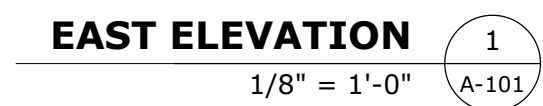
Webster Water  
Department

A	9/5/2023	PERMIT SET			
MARK	DATE	DESCRIPTION			
PROJECT NO:		W5002-034-MB			
DATE:		SEPTEMBER 5, 2023			
FILE:		W5002-034-MB-A-202			
DRAWN BY:		AH - MI			
DESIGNED/CHECKED BY:		MI			
APPROVED BY:		-			

SCALE: AS SHOWN

0 4' 8' 16'

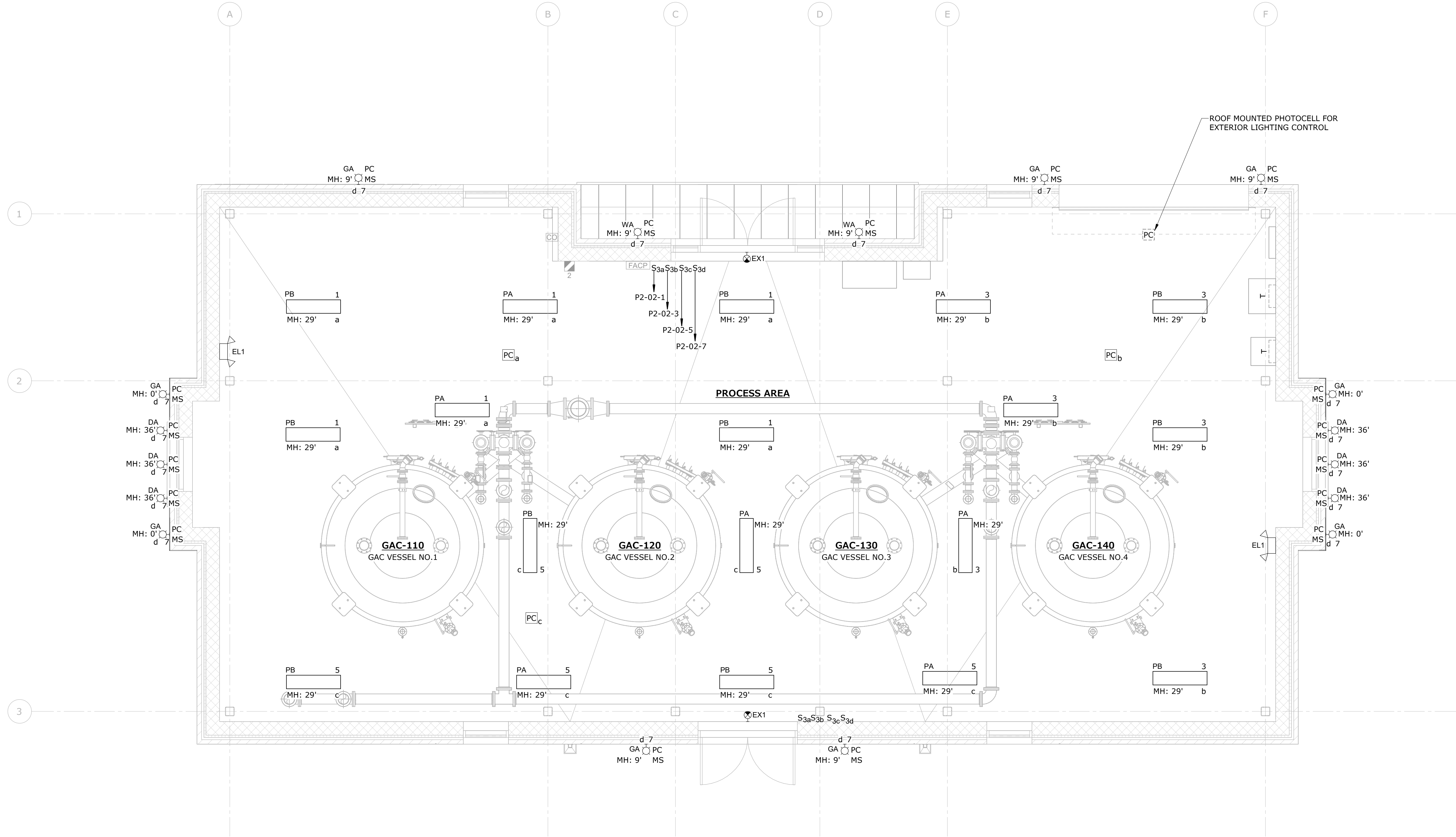
SCALE: 1/8" = 1'-0"







Last Saved: 8/29/2023 3:28:55 PM  
Plotted: 8/29/2023 3:28:55 PM  
Tighe & Bond: C:\Users\jmh\Documents\W5002-034-ELEC-MB-PFAS-jmh\key@tighebond.com.rvt



**ELECTRICAL LIGHTING PLAN - WTP**  
SCALE: 1/4" = 1'-0"

**NOTES:**

1. INTERIOR AND EXTERIOR LIGHTING SHALL HAVE THE ABILITY TO BE CONTROLLED BY TIMECLOCK AND SCHEDULES.
2. EXTERIOR LIGHTING SHALL BE CONTROLLED BY ROOF MOUNTED PHOTOCELL.
3. INTERIOR LIGHTING SHALL BE CONTROLLED VIA SWITCHES AND PHOTOCELL FOR DAYLIGHT HARVESTING. SET INTERIOR PHOTOCELLS TO 50FC.
4. COORDINATE LOCATION & MOUNTING HEIGHT OF EXTERIOR LIGHTING FIXTURES WITH WINDOWS PRIOR TO INSTALLATION.
5. THE ROOF-MOUNTED PHOTOCELL FOR EXTERIOR LIGHTING CONTROL SHALL BE POINTED NORTH.
6. COORDINATE LOCATION OF LIGHTING CONTROLS (INCLUDING SWITCHES AND PHOTOCELLS) WITH WINDOWS, STRUCTURAL SUPPORT BEAMS, AND PROCESS PIPING PRIOR TO INSTALLATION.

0 1' 2' 4' 8'  
SCALE: 1/4"=1'-0"

**Tighe&Bond**

**PERMIT SET  
NOT FOR  
CONSTRUCTION**

THIS DOCUMENT IS INCOMPLETE AND IS  
RELEASED TEMPORARILY FOR PROGRESS  
REVIEW ONLY. IT IS NOT INTENDED FOR  
BIDDING OR CONSTRUCTION PURPOSES.

**MEMORIAL  
BEACH PFAS  
WTP**

Webster Water  
Department

Town of Webster,  
Massachusetts

MARK	DATE	PERMIT SET DESCRIPTION
A	9/5/2023	PERMIT SET
PROJECT NO: W5002-034-MB		
DATE: SEPTEMBER 5, 2023		
FILE: W5002-034-B-E-201		
DRAWN BY: JMH		
DESIGNED/CHECKED BY: CST		
APPROVED BY: -		

**ELECTRICAL LIGHTING PLAN  
- WTP**

SCALE:

**E-201**